



BLUE MOUNTAINS CREATIVE ARTS CENTRE NEWSLETTER July 2020

WEBSITE: www.bmcac.org.au

FACEBOOK: [bmcac](https://www.facebook.com/bmcac)

[bmcacsaturdaypotters](https://www.facebook.com/bmcacsaturdaypotters)

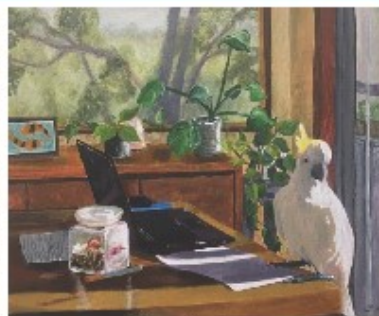


ARTIST CALL OUT

**OCTOBER
2nd
&
3rd**



Jack Buckley



Marnie Latz



Katherine Kennedy

Main Prize \$1000
Sadie Foster Prize \$350
Roy Brook Prize \$350
Barbara Dahl Prize \$350
Plus many more prizes

Entries must be a maximum size of 30cm x 30cm x 30cm
 Entry cost \$25 per entry, maximum of 2 entries per artist
 Open to all artists, 2D and 3D works accepted
 For Entry Form and T&C's visit the website

www.bmcac.org.au

CONTENTS

| | |
|--------|------------------------------|
| 3 | President's Report |
| | Covid-19 Rules |
| 4 | Art Director's Report |
| | New Class Fee Structure |
| 5 | Pottery Facilitator's Report |
| 6 | Life Drawing Report |
| 7 | Richard's Musings |
| 8 | Poetry Corner |
| 9 - 13 | What's On? |
| 14 -16 | Class Flyers |
| 17 | Class Timetable Term 3 |
| 18 | Yurt Studio Lease |

FROM THE EDITOR

With midwinter past the days are slowly getting longer again. A commensurately stronger spirit is evident, especially after the lockdown, with plenty of resumed activities.

BMCAC classes and groups are back on track (pages 8 & 14 – 16). Galleries nearby and in town have reopened their doors (see pages 8 to 13).

Members are reminded there are unclaimed membership cards ready for collection in the main room of the centre. Cards entitle members for discounts when purchasing art supplies from sponsoring businesses.

Please send your contributions for "Creations" to rudich7@dodo.com

Happy creating and stay safe.

Rudi Christen

Members please note:

On Thursday, 6 Aug. 7.30pm in the purple building at our Hare Street Centre a special resolution about the BMCAC Constitution will be discussed and then put to the vote, to be followed by the committee meeting. Members are invited to attend.



Art Prize Update (New Sponsors)

- Susan Templeman - Federal Member for Macquarie has donated \$250.
- Sonja Breckenridge from Picture Framing Warehouse Unit1/129 Russell St, Emu Plains has donated a \$100 voucher.
- Alison and Bronwyn will donate children's prize money.

Our main sponsor for the Art Prize.

Get in touch with us ! We like to hear from you.

| | | | |
|------------------|---|--------------|--|
| Alison JAMES | President & Workshop Coordinator | 0416 957 688 | arty_ali@hotmail.com.au |
| Ingrid RUSSELL | Vice President & Arts Director | 0423 124 473 | bmcac.mail@gmail.com |
| Bronwyn CAMPBELL | Secretary & Pottery Facilitator | 0411 041 054 | a.b.campbell@optusnet.com.au |
| Liz BRYDEN | Publicity, Gardening, Grants & Life Drawing | 0447 474 462 | ebryden@bigpond.com |

Dear Members,

Finally something to start to get excited about for 2020. Our classes are starting back this month and they are a much welcomed activity. Let's get out of our houses and embrace being creative!!!

Things are certainly starting to pick up activity-wise around the centre. We have people enquiring about classes, wanting to book the space for workshops and people interested in potentially teaching with us if we can fit them into the timetable and they offer something that we feel a good fit with the centre.

Some of you may be wondering about the increased price of our courses on offer and I would like to take the opportunity to remind all of our members that we are fully self-funded. Unlike other art centres in the mountains, we are not financially supported by the Blue Mountains City Council nor do we receive any money from any benefactors.

All of our funds are raised through our classes, workshops, room hire, percentage of sales at our exhibitions, art prizes and occasionally if we are lucky, a grant now and then.

This year we have taken a huge hit to our budget due to the centre being closed for all of Term 2 and we will continue to run at a reduced income as long as we are under COVID -19 restrictions as our class sizes are reduced and we need to implement COVID-19 hygiene standards.

We don't like to raise our prices but unfortunately, financially we need to, and still our prices remain within industry standards. We apologise if this has caused upset however if we are to continue to offer a centre that continues to strive to provide a great facility to the community then it is what we must do.

The committee is working very hard to do the best for the centre and for our members and I welcome any of our members who have experience or wish to help with the workload to please join us, many hands make light work.....it may also help open new opportunities and connections.

Your president,
Alison James

Covid-19 Rules

- Masks are not required
- Hand sanitize on entering the room.
- Sit 1.5 metres apart
- Use your own tools
- Teacher will clean communal tools at the end of the lesson
- Teacher will ask student with any symptoms to leave
- Students will be excluded if they have returned from overseas in the last 14 days, have been in contact with a covid patient in the last 14 days or have been in Victoria in the last 14 days.
- Teacher will disinfect surfaces after class.
- Student must sign an attendance book. Teacher must have class list with phone numbers on hand.
- Main room: 8 students + teacher.
- Pottery room: 6 potters + facilitator.

ART DIRECTOR'S REPORT *Ingrid Russell*

Enrolments are now open online for term three. Enrolments are starting to trickle in now and we already have one to three students in most classes. Enrolment deadline is Saturday 25th of July, and classes start Monday 27th of July. Personal enrolments will be taken at the centre on Saturday 25th from 10 till 1 pm.

Thank you to all students for your understanding regarding the new fee structure. Students having difficulty with paying upfront have now got the option of paying in two instalments. Please email us for the instalment payment links.

Students and teachers are reminded that social distancing and hygiene practices are necessary at all times to keep everyone safe. If you are unwell, please do not attend classes.

COVID-19 measures are requiring a class size maximum of 8 plus the teacher in the main room, and for pottery the maximum is 6 plus the teacher. Hand sanitiser must be used on entry and exit and all surfaces must be wiped down, including light switches and chairs, after each class. The use of personal tools and equipment is preferred.

It's really great to be back and we look forward to a busy and creative term.

New Class Fee Structure

As reported in June 'Creations' we have had to make the decision to increase fees across the board for a number of reasons. Our fees have been quite low for many years and we have been trying to slowly raise them to minimise student stress as much as possible. Our fees are still very good value for money at around \$10 per hour, and much lower than you would expect to pay at other venues. (Tennis lessons are around \$15 per half hour and music lessons are around \$35 per half hour as a comparison).

We have had to increase teacher pay to bring them in line with NAVA recommendations. Our teachers are all qualified in their field and deserve to be paid commensurate with their experience and qualifications.

We have had to undertake serious and extensive renovations to our ageing buildings to make the space a pleasant, comfortable and safe working environment for students and teachers, and to make the main room a suitable venue to hold exhibitions. These renovations are still an ongoing process. We apply for grants but are mostly self funded and rely a lot on our very generous, but very few, volunteers who give up their time to make the BMCAC a better place for all.

The BMCAC is not council owned or operated, so we must cover all costs ourselves. We do not get any discounts from council for rates, electricity or water, and also must pay leasing rates to the Land and Environment council to lease the land. These rates have been steadily rising. Insurances are also a major fee we need to pay.

With the COVID-19 situation we have had to put in place extra sanitisation measures and cleaning. We have also had to restrict class sizes which means less income. (It does mean more teacher time available to each student though.) We have also lost a term of revenue, but our costs have not changed.

In the scheme of things, the new fees are only \$6.50 a week more (not much more than a cup of good coffee). In reality a three hour class should be \$350.

I hope this explanation addresses any concerns. We have introduced the option to pay in two instalments of \$130 to make things easier for those in need. If you would like to take up that offer just send an email request for an instalment payment link.

We hope to see everyone back in term three. Members are always welcome to come along to committee meetings and get involved with the Centre.

POTTERY FACILITATOR'S REPORT *Bronwyn Campbell*

The Monday night group has been meeting regularly since opening with up to 4 members and the Nepean Potters have been meeting with 5 regular members. I would like to wish very warm welcome to our new members: Monique Donaldson and Phillip Thatcher from NPS. As you may know Jan Needham, the President of NPS, is a Life Member of BMCAC and Marianne Pollpeter has long been a member of both our groups. The NPS building renovation is beginning immediately, much sooner than we thought, and the group will most probably be with us for quite some time.

Any BMCAC members are welcome to join us on Tuesday mornings, if numbers allow.

Michael reports that the Saturday group has been averaging three including him but is expecting more based on interest and group applications. He would like to thank the coordinators for the setup of the room and me for the organization of the kiln books. He says the aircon has been great and has allowed his group to stabilise their start time regardless of weather. He also notes that a lot of members have improved their skills and done some great work in isolation

I am off to buy a new right knee on Tuesday 7th July so I will be out of action for a few weeks. Nick Savaa and Helen Still are juggling the keys between them for Monday night members. Marianne Pollpeter has the keys to the kingdom for the Tuesday group.

As you can see we have a few spaces for each of the groups but please ring the facilitator beforehand. Remember the limit is 7 for the pottery yurt.

If you have any queries or would like to attend any of the groups please contact:

Monday night

Helen Still +61432739828

Tuesday Morning

Marianne Pollpeter 47541059

Saturday Morning

Michael Dausmann through Facebook: bmcac saturday potters or 0415120139

It is so wonderful to see everyone coming back to pottery. Good luck with producing a masterpiece for the Art Prize. I will see you in a few weeks.

Kind regards

Bronwyn

PLEASE NOTE ALL FACILITATORS

Any visitor to your sessions must pay a \$10 temporary membership for that day if they are not already a member. This protects our society for insurance purposes. If that person later decides to join as a full member, the previous \$10 fee is not deducted from their membership.

Dear Life Drawers,

I expect that you will all be champing at the bit to get back to life drawing on Fridays. It has been a long break but one that we all had little control over. However, with the improving situation and some restrictions being eased BMCAC is planning to recommence life drawing sessions **from 7th August at the usual 10am to 1pm. The start back date is based on the current pandemic situation, however if there is any change we will let you know asap.**

The cost per session continues to be \$20. However, the Committee has asked that we ensure all life drawers are paid up members which is an insurance requirement. This means that to attend any session, all must be paid up members.

Consequently, first time attendees will now be required to pay an additional \$10 to cover them for insurance purposes (totalling \$30) at the first session. This will only provide insurance cover for the one session.

Alternatively, you can choose to pay the annual or part annual fee upfront at the first session. Paying for annual or part annual membership at the first session means you will be covered for insurance purposes for the remainder of the year and is a more economical option overall.

The annual membership fee is \$50. However new attendees will be charged \$25 if starting after June.

Importantly, for the above reasons, if you have been attending life drawing this year and haven't paid your membership fee yet, please do so asap. BMCAC relies on membership fees to keep operating and the pandemic has had a negative impact on our finances. So if you aren't a 2020 paid up member and have been coming prior to the pandemic closure, please complete a membership form with your payment and I will issue you with a receipt. Both will be forwarded to our Secretary and Treasurer. Membership forms are available at the centre.

Additionally, there has been a major change since our last session. Joy Myers Creed has retired from her long-standing role as the Life Drawing Coordinator. The timing seemed appropriate given the pandemic closure, but I am sure that you will miss Joy's steady hand at the helm. Happily though, Joy will continue as a life drawing member so we won't be without her encouraging presence and guidance.

With Joy's "departure" I will be taking on the Coordinator role and Gus Carrozza has kindly offered to stand in for me from time to time. I have big shoes to fill with Joy's retirement, but my aim is to continue life drawing with as little disruption to the routine as possible.

Importantly, there are some issues that we need to deal with as part of the start back. The number of people attending and hygiene requirements will be more stringent than in the past as BMCAC must comply with government health guidelines. For example, from the first session:

- If you are unwell or have come in contact with someone who is unwell, please do not attend life drawing.
- All attendees must write their name in a book that we will provide plus their best contact number. This is in addition to the usual signing in re payment and for insurance purposes. So, 3 sign ins.
- Hand sanitiser will be provided at the door and we ask that everyone uses it on arrival and at appropriate times throughout the session. The tables, easels and kitchen benches will need to be wiped down with disinfectant before and after the session. This shouldn't take much time if everyone steps up to help. Richard has offered to continue to set up the tables/easels but would appreciate your help.
- The room space allows for 11 drawers plus the model. We need a minimum number of 8 drawers to pay for the model. If we don't achieve this number, then the difference has to come out of our limited funds. So we encourage you to come along and make up the numbers. On the other hand, if more than 11 people attend it will be "first in best dressed". So coming late may mean that you can't be admitted. This is the situation at the moment, however this may change between now and the 7th August, depending on whether more restrictions are lifted or imposed.
- 1.5 metre social distancing is to be maintained. Therefore drawers using easels or sitting at desks will need to be spaced across the room accordingly. People using the kitchen need to keep the 1.5 metre rule in mind too. To avoid crowding in the kitchen we might look at having a couple of people preparing coffee/tea to distribute as a precaution.

Please bring your own cup but if this is a problem, we will have some disposable ones available.

If you have any concerns or questions re all the above, please email or ring me on 0447 474 462. I hope to see you all on the 7th August. **It would help with planning if you could let me know that you will be coming.**

Richard's Musings

I'm afraid I see too much frivolity in the Arts world today. In a crisis time like this it is a great shame if Art is not turned to the deeper needs of people. And what are some of the deeper needs that Art can ameliorate?

Some are our fears like the bushfire menace or the pandemic threat that inhabit our psyche.

We need amelioration between indigenous and western culture.

Loneliness is endemic and this can be ameliorated by genuine life drawing and painting.

A civilised person is at one in some way with their environment and this can be helped by significant landscape painting. There are images of great freedom that can be obtained from the natural world.

Heaviness of heart can be addressed by lightness and humour as can be seen in the works of Paul Klee.

So, let's create works that lend themselves to our and others' needs, despite depressing daily news. It is a great time to be alive and indeed to celebrate life through Art as others have done before us.

Richard Cutler



Paul Klee, 'Contemplation at Breakfast' (1925)

Poetry Corner

Virus

*Once in a while
our moon will mask
The face of the sun
Revealing a brilliant
Ancient cosmic corona.*

*Blessed who bestowed
Corona's magnificence
To a microbial virus
unmasking a fate
That can befall us all.*

*There is a mental virus
Just as vicious
Dispersing twitter clutter
Of bigotry and fake
And creepy stalking
On our electronic mirrors.*

*Couldn't a virtuous virus
Of mellow diction
Also multiply
Kindness and hope
Might even disinfect
Our Disney fiction?*

*Perhaps Corona virus
Is a phage invading us
And we are bacteria
Depleting the only body
That sustains our life
Our blue and precious planet.*

*May be after this pandemic
And further infestations
New humans will emerge
With better minds and morals.
To them our plague
Will be merely academic.*

Rudi Christen

Ask the Tree or the House

*Ask the tree or the house
Ask the rose or the fire
Hydrant – everything's
Waiting for you to notice.
Everything's waiting for you
To wrap your heart around it.*

*That music has been playing
Since you were born.
You must be mad to resist it.
Always the beloved
Surrounds us,
Eager to dance.
All we have to do is ask.*

Gregory Orr

WHAT'S ON ?

Galleries, Exhibitions, Workshops, Prize Entries, Coming Events

WORKSHOPS

Sat. 18 July – Jewellery with Jane Tadrist

Sat. 25 July – Tie Dye Shibori with Pip Bishop

Check BMCAC website for details

Sun. 26 July from 10am - 4pm. — Painting with Christopher Vidal.

For details right click on the address below and click Open Hyperlink.

<https://facebook.com/events/s/painting-the-light-on-mt-banks/1194795577535509/?ti=icl>

If you are interested in Print Making please contact
Katherine Kennedy on 0402 470 231

IMPORTANT DATES

Thu. 6 Aug., 7.30pm Next committee meeting in the purple building at Hare Street.

Sat. 25 July 10am – 1pm **Enrolment for Term 3:** Creative Kids Vouchers are accepted.

Sat./Sun. 3 & 4 October **Blue Mountains Art Prize Exhibition**
Outdoor Opening at 1pm on Saturday afternoon.

Entries opened on 1st July. Entry fee is \$25.00.

Sat. 17 October **Enrolment for Term 4**

Fri. - Sun. 16, 17 & 18 Oct. **Members Exhibition including ceramics and other crafts**
Official Opening Fri. 7.30pm.

PENRITH REGIONAL GALLERY

86 River Road, Emu Plains

Our Gallery has reopened on 28 June 2020 for you to enjoy the works from our new exhibition,
[Dream Realised: our community victory.](#)

As part of our new COVID-safe measures, we will be implementing timed ticketing with a maximum of 50 people per timed session. We assure you that social distancing rules and measures remain paramount in the Gallery, with new stringent cleaning guidelines in place.

The exhibition will be open across three ticketed sessions per day, 10-11.30am, 12-1.30pm and 2-3.30pm, seven days a week, with time for cleaning in between each session. Please note that currently, our timed sessions are available for bookings from 28 June – 31 July 2020 only.

Bookings for timed sessions are available [online](#) now or at the venue.

ARTBytes Newsflash - BMCC is seeking Expressions of Interest for Art Projects in Katoomba

Blue Mountains City Council have announced a call out for an art installation at the Katoomba Civic Centre. They are looking for expressions of interest for artists to contribute to their vision for the prominent site in central Katoomba. Currently an important pedestrian link between Katoomba Street and the Blue Mountains Library and Cultural Centre, the site is intended to become an attractive and thought-provoking area between the town's main street and one of its major commercial and cultural centres. Council intends to select a small number of artists for projects at a range of locations within the site. Artists who work with a range of media which may include paint, three-dimensional installation and light and sound may be interested.

A site walk-through and Q&A session is planned for the third week of June for interested potential applicants.

Check the [BMCC notice here](#)

Request for [Expressions of Interest can be downloaded here](#).

Submissions should be submitted by close of business Wednesday 8 July, 2020.

BLUE MOUNTAINS CULTURAL CENTRE

30 Parke Street, Katoomba 2780

We are excited to announce that the Cultural Centre has reopened. Due to COVID restrictions there will be some changes to our usual opening times.

Gallery and Shop

Monday – Friday 10am – 5pm

Saturday + Sunday – 10am – 4pm

Public Holidays – 10am-2pm (closed Good Friday and Christmas)

Gallery Café: Weekdays only 9.30am – 2.30pm (closed weekends).

Kayo Yokoyama: My Story

13 June – 26 July 2020

In this exhibition Kayo Yokoyama explores her Japanese cultural heritage, focusing on aspects of Zen philosophy which played a significant part in her upbringing. Initially struggling with her Japanese heritage and strict cultural values Yokoyama moved to the US to embrace contemporary Western society before moving to Australia, where she started to re-connect with her cultural identity and Zen philosophy. Now based in Blackheath in the Blue Mountains, her work often results in physical manifestations of her search for a sense of home and belonging across the different countries and cultures she has lived in. Delicately etched trees are a re-occurring motif which hint at the universal comfort of nature even in unfamiliar places. The moon and waterfalls are recent additions to her artistic language representing nature's beauty and companionship. Yokoyama's new body of work will explore Japanese aesthetics and echo ideas of Zen philosophy.



LEONARDA KOVAČIĆ

Sandstone Stories

Photographic exhibition
10 July – 30 August 2020



Heritage Gallery
NSW National Parks and Wildlife Service
End of Govetts Leap Rd, Blackheath, NSW, Australia

Open 9am–4pm, Monday to Sunday

BRAEMER HOUSE & GALLERY

104 Macquarie Road, Springwood 2777

Braemar House and Gallery is closed until further notice due to Coronavirus (COVID-19).

DEFIANCE GALLERY

12 Mary Place, Paddington NSW 2010

+61 (0)2 9557 8483 Wed - Sat: 11 - 5

Abstraction 2020 Group Exhibition

1 July - 23 July 2020

Including Defiance Gallery artists Bill Brown, Ann Thomson, Roy Jackson, Alun Leach-Jones, Michael Buzacott, Jan King, Ivor Fabok, Paul Higgs, Kevin Norton, Dave Teer and Campbell Robertson-Swann



Michael Harrison, *Everybody knows*, 2004

ANNETTE LARKIN FINE ART

Suite 4, 8 Soudan Lane, Paddington

Phone: 02 9332 4614

Hours or services may vary

Winter 2020

12 June - 29 August 2020

Carl Plate

Richard Dunn

Susan Norrie

Jude Rae

Tony Clark

Ken Whisson

John Young

Frank Hinder

GALLERY POMPOM

2/27-39 Abercrombie St Chippendale NSW 2008

Phone 0430 318 438

Wed-Sat 11-5, Sun 1-5

WINNIPER Works by Evelyn Malgil

(Warmun Art Centre, Kimberleys)

24 June – 19 July 2020



Between the Fence
and Freedom

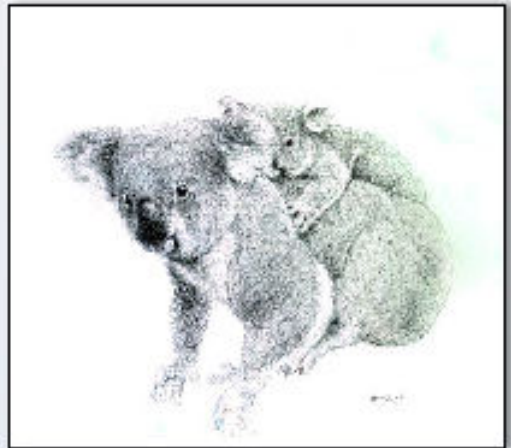


Drawing- for Beginners and Intermediate

Mondays 6:30 – 8:30 pm

Teacher: Gus Carrozza

*Learn the finer
skills of drawing*



In a fun and relaxed creative space, learn the techniques and skills that will unlock your inner artist. Working with a variety of media, watch the development of your drawing skills including measuring, judging proportion, shading, using tone to create 3-D volume and more. Intermediate students will develop their skills further and also work towards developing an individual style using their preferred medium.

Places are limited
Enrol at www.bmcac.org.au



**Blue Mountains
Creative Arts Centre
Glenbrook, Inc.**



Pen & Wash with Watercolour

For beginners and intermediate

Thursdays 1:30 to 3:30pm

Teacher: **Gus Carrozza**

*Learn to draw and paint using pen
and ink with watercolour*



This class is great for beginners, and also those with some experience who want to expand their skills in drawing and painting in watercolour.

Using a variety of pens and inks, students will learn different sketching techniques to draw a wide range of subjects. Watercolour can then be added to add colour and atmosphere. Subjects may include still life, landscapes, animals, people, figures and more. Bring along your own favourite subject reference to work on or use the reference material supplied.



Places are limited
Enrol at www.bmcac.org.au



**Blue Mountains
Creative Arts Centre
Glenbrook, Inc.**



Painting with Watercolour

For beginners and intermediate
Thursdays 6:30 to 9:00pm
Teacher: Gus Carrozza



Learn the basics or extend your skills in painting with watercolour



Learn the basics—from different washes, brushwork, colour mixing and colour theory. Exercises are designed to build skills and give confidence working in the beautiful medium of watercolour.

For the more experienced, be guided and encouraged to further develop your skills and individual style.

Places are limited
Enrol at www.bmcac.org.au



Blue Mountains
Creative Arts Centre
Glenbrook, Inc.





Blue Mountains Creative Arts Centre, Glenbrook

Class Timetable Term 3 2020 www.bmcac.org.au

Enroll early online or on ENROLMENT DAY - Saturday 25th July, 10:00AM TO 1:00PM at the BMCAC.

Week 1 starts 27th July, and goes for 8 weeks, unless otherwise stated on timetable.

Please note: Children must be enrolled **prior** to attending lessons. Late enrolments cannot be accepted unless there is room in the class, please email enquiry to bmcac.mail@gmail.com. Children's classes are for children aged 6 to 12 years. Parents please sign Terms and conditions.

All adult students must be members of BMCAC. Membership is \$50 per annum. \$25 after June. Extra \$15 to join Potters Group or Print Making Group.



| Day | Time | Code - Class | Teacher |
|-------|--------------|--|-------------------------------------|
| Mon | 10:30-1:30 | AAM10 – Drawing/Painting for beginners and Intermediate -Step by step instruction from drawing to painting. Build your confidence and skills. \$240 | Christopher Vidal |
| | 2:00 – 6:00 | Drop in and Print – No tuition. Membership plus \$15 per session | N/A |
| | 4:00-5:30 | CPM4 – Pottery for Children - Hand building and some wheel work for ages 6 to 12. \$180 | Alison James |
| | 6:30 – 8:30 | ADM6 – Drawing for Beginners and Intermediate – learn the finer skills of drawing. \$180 | Gus Carrozza |
| | 6:30-9:30 | Drop in and pot – experienced only – no tuition. Membership of BMCAC and Potters Group required. \$5 per session | N/A |
| Tues | 10:00-1:00 | AAT10 – Painting Realism in Oils & Acrylics – Learn traditional methods. Using oils and traditional methods learn to paint still life and landscapes, composition, perspective and capturing light. Beginners to intermediate. \$240 | Christopher Vidal |
| | 3:00 – 6:00 | AMT3 – Mosaics - Come and learn mosaics for the first time or improve your existing skills. Adult class suitable for all levels. Each term we do a different technique. Students with mosaic experience are welcome to work on their own projects instead after consultation with Marian. \$210 - plus \$35 materials fee in cash (7 x 3 hr sessions) | Marian Shapiro |
| | 4:00-5:30 | CPT4 – Pottery for Children– Fun with Clay. Ages 6 – 10 yrs. \$180 | Alison James |
| | 6:00-8:00 | TPT6 – Pottery for Teens – \$180 plus \$25 cash glaze and firing fee. Bring your own clay and tools. Optional: A basic tool kit and clay \$45 cash on first session, or just clay \$25. | Katherine Kennedy |
| | 6:30-9:30 | AMT6 – Mosaics - Come and learn mosaics for the first time or improve your existing skills. Adult class suitable for all levels. Each term we do a different technique. Students with mosaic experience are welcome to work on their own projects instead after consultation with Marian. \$210 - plus \$35 materials fee in cash (7 x 3 hr sessions) | Marian Shapiro |
| Wed | 10:00-1:00 | ASJW10 – Creating Silver Jewellery- Essential techniques for creating traditional silver jewellery for beginners and improvers, covering essential skills such as saw-piercing, texturing, forming, soldering and finishing. \$240 plus materials and tool hire fee cash \$90 | Jane Tadrast |
| | 10:00-12:00 | HSPW10 – Pottery for home schooled children \$180 | Katherine Kennedy |
| | 1:30 – 3:30 | APMW1 – Adults Print Making. Learn mono print, collograph, etching and lino block printing. \$180 plus materials fee \$35 cash. *NEW* | Katherine Kennedy |
| | 4:00-5:30 | CAW4 – Mixed Bag – A fun class of drawing, painting and crafting. Great for younger children 6 – 10 years. \$180 | Katherine Kennedy |
| | 6:30-8:30 | APW6 – Pottery for Adults – Hand building and wheel throwing for beginners and continuers. beginners class, 4 weeks of hand building and 4 weeks of wheel throwing. \$180, (plus \$25 cash glaze and firing fee due week 3). Optional: A basic tool kit and clay \$45 cash on first session, or just clay \$25. | Ingrid Russell and Bronwyn Campbell |
| | 6:30-9:30 | ASJW6 – Creating Silver Jewellery -This class is an ongoing traditional jewellery course for beginners and improvers, which covers different techniques each term. \$240 plus materials and tool hire fee \$90 cash | Jane Tadrast |
| | 7:30-9:30 | Committee meeting – first Thursday per month. Members welcome. | N/A |
| Thurs | 1:30-3:30 | APTH1 – Pottery for Adults – beginners and continuers. Hand building and wheel work. \$180 plus \$25 cash glaze and firing fee due week 3. Optional: A basic tool kit and clay \$45 cash on first session, or just clay \$25. | Ingrid Russell |
| | 1:30-3:30 | AWTH1 – Pen and Wash with Watercolours– beginners and intermediate. Learn the basics or extend skills in pen and wash with watercolours. - \$180 | Gus Carrozza |
| | 4:00-5:30 | CATH4 – Manga Drawing for Children – Japanese style cartoon drawing technique for budding cartoonists 9 to 14 years. Materials provided, however students may bring their own Visual Arts Diary and favourite pencils and textas. \$180 | Ingrid Russell |
| | 6:30 – 8:30 | APTH6 – Pottery for Adults – Beginners and continuers–Hand building and wheel work. Beginners and continuers. Firing and glaze fee \$25 cash. Optional: A basic tool kit and clay \$45 cash on first session, or just clay \$25. (6 x 2hr sessions only, no session 1 st Thurs of month). \$150 | Ingrid Russell |
| | 6:30-9:00 | AWTH6 – Painting with Watercolour – beginners and intermediate. Learn the basics or extend skills in painting with watercolour. (6 x 2.5 hr sessions only, no session 1 st Thurs of month). \$180 | Gus Carrozza |
| | 7:30-9:30 | Committee meeting – first Thursday per month. Members welcome. | N/A |
| Fri | 10:00 – 1:00 | Life Drawing. No tuition. Membership plus \$20 per session. | N/A |
| | 4:00 – 5:30 | CAF4 – Young Masters Mixed Bag – Art for children aged 8 – 12, each week study a master or movement and use as inspiration for art making. \$180 | Alison James |
| | 2:00 – 5:00 | Drop in and Print – experienced only – No tuition. Come and use our print making facilities. Membership of BMCAC and Print Group required. \$15 per session | No Tuition |
| Sat | 9:00-12:00 | Drop in and pot – experienced only – no tuition. Membership of BMCAC and Potters Group required. \$5 per session | |
| | 9:00 – 5:00 | Drop in and Print – experienced only – No tuition. Come and use our print making facilities. Membership of BMCAC and Print Group required. \$15 per session. Available when no exhibitions or workshops are happening. | |
| Sun | 9:00-5:00 | Drop in and Print – experienced only – No tuition. Come and use our print making facilities. Membership of BMCAC and Print Group required. \$15 per session. Available when no exhibitions or workshops are happening. | |

BMCAC STUDIO



Artists Studio lease available \$120/pw



Cnr of Hare & Moore St,
Glenbrook, NSW

Artists Benefits

- Publicised weekend exhibition at the closure of the residence including plinth and hanging system use.
- 3 month or 6 month lease option.
- A hexagonal yurt studio of approximately **41 square meters**
- Become part of a thriving arts community at BMCAC.
- Surrounded by a world heritage national park.
- Close to Glenbrook village, clubs and transport (bus/trains)
- Invitation to exhibit work in member exhibitions during year of lease
- Be inspired by visiting the many public and private galleries throughout the Blue Mountains.
- Exposure to a network of professional Blue Mountains practicing artists.
- Free advertising through BMCAC socials for your exhibition of completed works/performance at BMCAC
- Temporary full membership of BMCAC which includes
 - o access to printmaking facilities
 - o access to ceramic facilities
 - o access to life drawing
 - o access to 1 free weekly class of your choice

For more information please contact bmcac.mail@gmail.com
View www.bmcac.org.au for more information about BMCAC