



BLUE MOUNTAINS CREATIVE ARTS CENTRE NEWSLETTER August 2020

WEBSITE: www.bmcac.org.au

FACEBOOK: [bmcac](https://www.facebook.com/bmcac)

[bmcacsaturdaypotters](https://www.facebook.com/bmcacsaturdaypotters)



Renovation in Progress

David Russell working on the end wall of the centre, installing two new windows, insulation and a new door.

10 July, 2020



7 August 2020

CONTENTS

- 3 Covid-19 Information
- 4 President's Report
Art Director's Report
- 5 Pottery Facilitator's Report
Life Drawing Report
Publicity, Grants and Gardening Report
- 6 Richard's Musings
- 7 Poetry Corner
- 8-11 What's On?
- 12 Call-out for the
Blue Mountains Art Prize
- 13 Covid-19 Rules



Our main sponsor for the Art Prize.

FROM THE EDITOR

If you are suffering from Corona news overload try to divert your attention and time into your creative sphere. It can be a tonic to get absorbed in your painting or drawing practice, seeing the potter's wheel spinning and feeling moist clay caressing your hands, arranging a new, multicoloured mosaic pattern or writing a poem that addresses your plight.

To stay healthy and safe it is important to follow all the safety procedures and to keep loving each other from a distance. But it isn't necessary to overload ourselves emotionally and with every statistical detail of the evolving pandemic in every part of the world.

So, your attention is especially drawn to the call-out for the Blue Mountains Art Prize (see page 12).

Also, please take note of the very salient Covid-19 information on the next page, supplied by Joy .Myers Creed.

Please send your contributions for "Creations" to rudich7@dodo.com

Happy creating and stay safe.

Rudi Christen

Get in touch with us ! We like to hear from you.

Alison JAMES	President & Workshop Coordinator	0416 957 688	arty_ali@hotmail.com.au
Ingrid RUSSELL	Vice President & Arts Director	0423 124 473	bmccac.mail@gmail.com
Bronwyn CAMPBELL	Secretary & Pottery Facilitator	0411 041 054	a.b.campbell@optusnet.com.au
Liz BRYDEN	Publicity, Gardening, Grants & Life Drawing	0447 474 462	ebryden@bigpond.com

Important information that will shed more light on the Covid-19 health issue.

From John's Hopkins Hospital

This virus is not a living organism . It is a protein molecule (RNA or DNA) covered by a protective layer of lipid (fat) which, when absorbed by the cells of the ocular (eyes), nasal (nose) or buccal mucosa (mouth), changes its genetic code (mutates) and converts into aggressor cells and multiplier cells.

- * Since the virus is not a living organism, but is a protein molecule, it cannot be killed. It has to decay on its own.
The disintegration time depends on the temperature, humidity and type of material where it lies.
- * The virus is very fragile; the only thing that protects it is a thin outer layer of fat and that is the reason why soap or detergent is the best weapon. The foam CUTS THE FAT (that is why you have to scrub for 20 seconds or more, to create lots of foam).

By dissolving the fat layer, the protein molecule disperses and breaks down.
- * HEAT melts fat; this is why it is necessary to use water above 25 C degrees for hand washing, laundry and cleaning surfaces. In addition, hot water makes more foam, making it more effective.
- * Alcohol or any mixture with ALCOHOL over 65% DISSOLVES ALL FAT, especially the external lipid layer of the virus.
- * Any solution with 1 part BLEACH and 5 parts water directly dissolves the protein, breaking it down from the inside.
- * Oxygenated water increases the effectiveness of soap, alcohol and chlorine, because peroxide dissolves the virus protein. However, because you have to use it in its pure form, it can damage your skin.
- * NO BACTERICIDE OR ANTIBIOTIC WILL WORK because the virus is not a living organism like bacteria; antibodies cannot kill what is not alive.
- * The virus molecules remain very stable at colder temperatures, including air conditioning in houses and cars. They also need moisture and darkness to stay stable. Therefore, dehumidified, dry, warm and bright environments will degrade the virus faster.
- * UV LIGHT on any object that may contain the virus breaks down the protein. Be careful, it also breaks down collagen (which is protein) in the skin.
- * The virus CANNOT go through healthy skin.
- * Vinegar is NOT useful because it does not break down the protective layer of fat.
- * NO SPIRITS or VODKA are effective. The strongest vodka is only 40% alcohol, and you need a minimum of 65%.
- * LISTERINE is 65% alcohol.
- * The more confined the space, the higher the concentration of the virus there can be. The more open or naturally ventilated, the less.

You have to wash your hands before and after touching any commonly used surfaces such as : mucosa (mouth area) , food, locks, knobs, switches, remotes, cell phones, watches, computers, desks etc. and don't forget when you use the bathroom.
- * You have to MOISTURIZE YOUR HANDS due to frequent washing. Dry hands have cracks and the molecules can hide in the micro cracks. The thicker the moisturizer, the better.
- * Also keep your NAILS SHORT so that the virus does not hide there.

PLEASE SHARE WITH YOUR FRIENDS

PRESIDENT'S REPORT *Alison James*

Hello everyone and a big welcome to all of our new students and members.

I wanted to say a very big thank you to all of our students, teachers, facilitators and volunteers for doing the right thing as far as following the COVID-19 requirements that we are asking of you. We really appreciate everyone's efforts which ultimately allow us to continue to operate.

I'd like to welcome our Life drawers back this term, starting on the 7th of August, with their new facilitator Liz Bryden. Liz has had to make a few adjustments to work around COVID requirements and we look forward to seeing new works from the group soon.

We have a number of regular members who at this time aren't attending the centre as they normally would as they are physically distancing for the safety of their own health during these uncertain times. So I'd like to say a quick shout out to them "we are thinking of you, and hopefully we will see you all soon". If you are staying at home but still being creative, feel free to send us some pictures of your work and we'll share it in Creations.

We have plenty to look forward to with our Art Prize coming up. A \$150 product voucher with Smalti Australia has been kindly donated by Smalti Australia owner, David Lacey, as a prize specifically for mosaic entrants. I'd like to thank Marian Shapiro for asking Caitlin Hughes if she would be available to judge this specific prize and she has kindly accepted.

Our Potters Exhibition is confirmed for October with all required paperwork (there was extra to be done this year) completed and given the green light. Thanks Liz and Bronwyn for chasing this up.

Completing all the COVID safe requirements is definitely creating more work this year but we are getting through it all. Planning for anything at the moment is a challenge but fingers crossed all goes ahead.

Keep sending your pictures and any stories you might like to share and as always keep being creative.

Your president

Alison.

ART DIRECTOR'S REPORT *Ingrid Russell*

It's great to be back!

The provision of hand sanitisers and spray disinfectant has been supported by students and teachers. Thank you to Alison for making sure we are kept supplied and the teachers for filling out the cleaning register.

Unfortunately, the two children's pottery classes failed to reach minimum numbers and had to be cancelled, but the Home School pottery class, two Mixed Bag classes and the Manga class are running. A reminder to the kids' classes to be thinking about work for the upcoming Art Prize.

POTTERY FACILITATOR'S REPORT *Bronwyn Campbell*

The Nepean Potters have been attending regularly on Tuesdays. Jan, their President, reports that she has been told their building at St Marys will most likely be completed by mid-October. We will be sad to say goodbye when they go.

The Monday night group would like to give a warm welcome to our new member, Gary Roberts, who has been keeping Nick company for the last two weeks. They have had The Centre to themselves due to our other regulars taking time off for various reasons. However, a number of the regulars have indicated they are ready to return. Also, we have had a couple of prospective new members indicate they are interested in joining our Monday night group, so it becomes imperative that you text me on a Sunday or Monday if you wish to attend as 7 attendees is our Covid safe limit. I am sure we can work out some way to accommodate everyone, even if we have to institute a roster system for a while.

If any potters wish to make bookings for their own firings please ring me and I will make arrangements for you.

REMEMBER: The exhibition we are holding on 16th, 17th and 18th October is now a full members' exhibition. Any BMCAC Member is able to submit work for that exhibition. We will have more details in the September Creations.

I am hoping to make my first appearance since my knee op. next Monday night for a short while to say hi. I look forward to seeing all your new creations.

LIFE DRAWING REPORT *Liz Bryden*

Life Drawing recommenced on 7th August but cut to two hours instead of the usual three. The class fee of \$20 per person is kept the same to cover the cost for the model as we must allow for social distancing and lower numbers. The hope is that this arrangement will work but we will change and adapt as required.

PUBLICITY, GRANTS AND GARDENING REPORT *Elizabeth Bryden*

We received good news regarding the Community Assistance Grant. The maximum amount we could have received was \$1000 but I am thankful for the partial grant of \$875. The grant will go towards the path connecting the main building to the front. I am still to hear if we have been successful in our application to the Community Building Grant which was also for the path but additional much needed work.

The B.M. Gazette published our upcoming Members Exhibition, Term 3 and Life Drawing recommencement in their 'Along the Highway' section a few weeks ago. Our banner was displayed on the Glenbrook Oval fence regarding Term 3 enrolment. So no cost involved in any!

Gardening continues as usual (but without having to water due to the wonderful rain). Most plants are surviving and some may give us some much needed colour in the Spring. All have had a feed and tidy up and the succulents near the main building are slowly spreading. I'm looking forward to seeing what Spring has in store! Renovation of the purple Building - Plenty of progress has been made. The two new windows are in place and a new door has been fitted. Most of the exterior panelling has been completed (see front page). Only painting remains to be done. Looking for volunteers!

Richard's Musings

Matisse on Space, Light and Models

In 1942 Matisse was asked: "What creates the charm of your paintings of open windows?" He replied: "Probably a feeling I have that, for me, space is a single unity, from the horizon to the inside of my studio room, and that the boat passing by exists in the same space as the familiar objects around me, and the wall holding the window does not create two different worlds... A cosmic space, in which one feels the walls no more than does a fish in the sea."

He had written In 1930: "Most painters need a direct contact with objects to feel that they exist, and they can only reproduce their strictly physical aspects. They are looking for an external light to illuminate them internally. Whereas the artist or poet have an inner light which transforms objects to make a new world of them - a sensitive, organized model of the living world, which is in itself an infallible sign of divinity, a reflection of divinity."

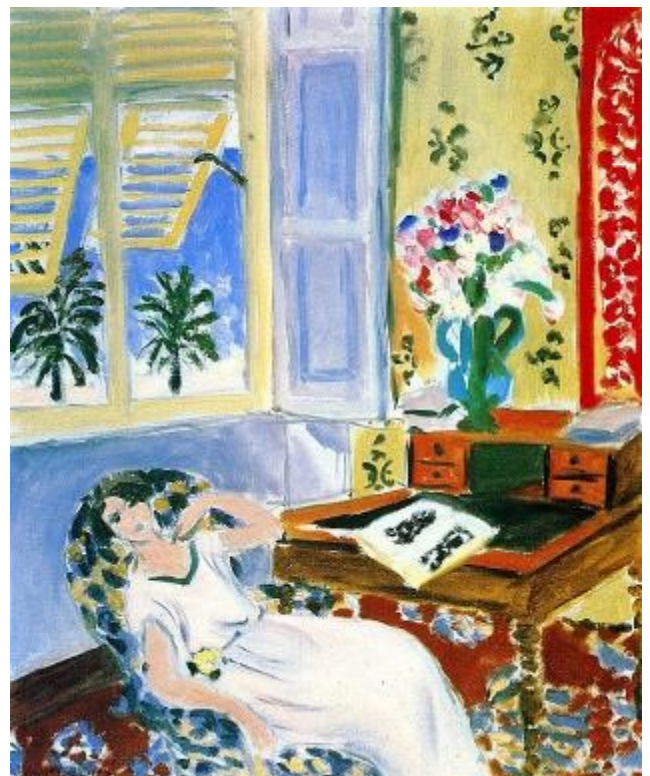
"The different lights that I have experienced have made me more demanding in imagining the spiritual light I'm speaking about, created from all the light that I have absorbed. It was only after I enjoyed the light of the sun for a long time that I tried to express myself through the light of the spirit."

Talking about the models he hired Matisse said: "Their shapes are not always perfect, but they are always expressive. The emotional interest aroused in me by them does not necessarily appear in the representation of their bodies. Often it is rather in the lines through special values distributed over the whole canvas or paper, forming the orchestration or architecture. But everyone does not see this."

Louis Aragon once asked Matisse: "Why must a painter have a model if he deviates from it?" Matisse replied mischievously: "If we didn't have a model, we wouldn't be able to deviate from it!"



Henri Matisse, Safrano Roses at the Window, 1925



Henri Matisse, Interior in Nice, a Siesta, 1922

Poetry Corner

St Remy.

*Wounded. Rejected. Ridiculed.
The red-haired madman
Stumbled up the hill.
He had tried to share with others
His whirling private world.
But Gauguin, his chosen friend,
Could not comprehend.
And unbearable night descended.*

*So, with Theo's help,
He made this desperate journey,
With faint hope of salvation.*

*The sites of his epiphanies remain for us today.
Gnarly olive groves
Golden fields of wheat,
And wheels of weeds beside the road,
Marked now for the tourists
Like Stations of the Cross.*

*He sought sanctuary and healing
In the Asylum of St Paul...
With his dark despair
And bursts of exaltation,
And the babbled Christianity
That he had one time preached
To the poor, and to the harlots
In a grim mining village.
The nuns bound him,
Purged and drowned him.
But all to no avail.*

*Then his mental darkness lifted.
Vincent looked out from his cell
Onto the abbey garden.
The plants and flowers framed
A pathway to Eden.
A paradise reborn.*

*Stabbing light and colour,
Undulated and embraced Van Gogh
And travelled the roads with him
To the end of his few remaining days.
Until death and time brought fame
And a kind of resurrection.*

Marshall Smither

Vincent van Gogh
The Ward at the Hospital
at Arles, 1889



WHAT'S ON ?

Workshops, Galleries, Exhibitions, Prize Entries, Coming Events

IMPORTANT DATES

- | | |
|------------------------------|--|
| Thu. 3 Sept 7.30pm | Next committee meeting in the purple building at Hare Street. |
| Sat./Sun. 3 & 4 October | Blue Mountains Art Prize Exhibition
Outdoor Opening at 1pm on Saturday afternoon.
Entries are open Entry fee is \$25.00. |
| Sat. 17 October | Enrolment for Term 4 |
| Fri. - Sun. 16, 17 & 18 Oct. | Members Exhibition including ceramics and other crafts
Official Opening Fri. 7.30pm. |

Please check the BMCAC website for up-to-date details.

PENRITH REGIONAL GALLERY

86 River Road, Emu Plains

Our Gallery has reopened for you to enjoy the works from our new exhibition,
[Dream Realised: our community victory.](#)

Until 31 August

As part of our new COVID-safe measures, we will be implementing timed ticketing with a maximum of 50 people per timed session. We assure you that social distancing rules and measures remain paramount in the Gallery, with new stringent cleaning guidelines in place.

The exhibition will be open across three ticketed sessions per day, 10-11.30am, 12-1.30pm and 2-3.30pm, seven days a week, with time for cleaning in between each session. Please note that currently, our timed sessions are available for bookings from 28 June – 31 July 2020 only.

BLUE MOUNTAINS CULTURAL CENTRE

30 Parke Street, Katoomba 2780

We are excited to announce that the Cultural Centre has reopened. Due to COVID restrictions there will be some changes to our usual opening times.

Gallery and Shop

Monday – Friday 10am – 5pm

Saturday + Sunday – 10am – 4pm

Public Holidays – 10am-2pm (closed Good Friday and Christmas)

Gallery Café: Weekdays only 9.30am – 2.30pm (closed weekends).

MAPBM: BLUE

1 August – 20 September

Blue is the most popular colour in contemporary Western societies, a colour with profound social and historical associations and symbolism that resonates throughout art, language, history, religion, gender, science, psychology and more. The exhibition *BLUE* presents the works of MAPBM artists exploring the notions of blue through a variety of media – painting, video, photograph , sculpture, installation art and performance art.

BRAEMER HOUSE & GALLERY

104 Macquarie Road, Springwood 2777

Laurent Rivory Ferrophilia (Sculpture)

Marlene Jones The Beauty of Sepia

&

Jean-Luc Batchelor Digital Interplay

6 August – 30 August 2020



Marlene Jones, *Regal 2020, oil on canvas*



JEAN-LUC BATCHELOR *Impulse 2020*



Michael Harrison, *Everybody knows*, 2004

ANNETTE LARKIN FINE ART

Suite 4, 8 Soudan Lane, Paddington

Phone: 02 9332 4614

Hours or services may vary

Winter 2020

12 June - 29 August 2020

Carl Plate

Richard Dunn

Susan Norrie

Jude Rae

Tony Clark

Ken Whisson

John Young

DEFIANCE GALLERY

12 Mary Place, Paddington NSW 2010

+61 (0)2 9557 8483 Wed - Sat: 11 - 5

Paul Higgs

Material Energy

26 August - 17 September 2020



Paul Higgs, *Naughty Boy*

LEONARDA KOVAČIĆ

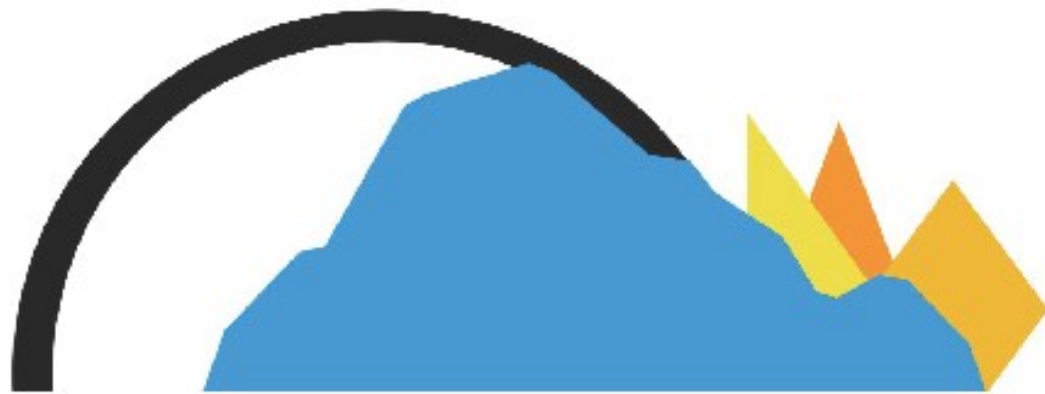
Sandstone Stories

Photographic exhibition
10 July – 30 August 2020



**Heritage Gallery
NSW National Parks and Wildlife Service
End of Govetts Leap Rd, Blackheath, NSW, Australia**

Open 9am-4pm, Monday to Sunday



Blue Mountains Art Prize

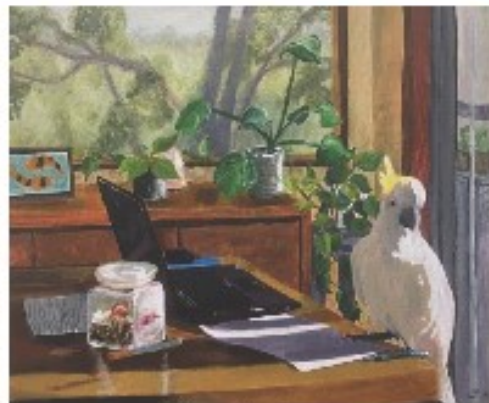
2020

ARTIST CALL OUT

OCTOBER
2nd
&
3rd



Jack Buckley



Marnie Latz



Katherine Kennedy

Main Prize	\$1000
Sadie Foster Prize	\$350
Roy Brook Prize	\$350
Barbara Dahl Prize	\$350

Plus many more prizes

Entries must be a maximum size of 30cm x 30cm x30cm
Entry cost \$25 per entry, maximum of 2 entries per artist

Open to all artists, 2D and 3D works accepted

For Entry Form and T&C's visit the website

www.bmcac.org.au

Covid-19 Rules

- Masks are not required
- Hand sanitize on entering the room.
- Sit 1.5 metres apart
- Use your own tools
- Teacher will clean communal tools at the end of the lesson
- Teacher will ask student with any symptoms to leave
- Students will be excluded if they have returned from overseas in the last 14 days, have been in contact with a covid patient in the last 14 days or have been in Victoria in the last 14 days.
- Teacher will disinfect surfaces after class.
- Student must sign an attendance book. Teacher must have class list with phone numbers on hand.
- Main room: 8 students + teacher.
- Pottery room: 6 potters + facilitator.