



BLUE MOUNTAINS CREATIVE ARTS CENTRE NEWSLETTER October 2020

WEBSITE: www.bmcac.org.au

FACEBOOK: [bmcac](https://www.facebook.com/bmcac)

[bmcacsaturdaypotters](https://www.facebook.com/bmcacsaturdaypotters)



The Blue Mountains Art Prize

See further details on pages
10 to 14

The Major Prize of \$1000
was awarded to

Coleen English-Thomas
for her mixed media on canvas
"Quiet Mind of Mine".

**OUR MEMBERS' EXHIBITION IS REPLACING OUR ANNUAL
CLAY CREATIONS EXHIBITION THIS YEAR.**

IT WILL BE HELD AT THE GLENBROOK THEATRE HALL ON THE

17TH – 18TH OCTOBER

Details for entering artworks see page 4

CONTENTS

3	Members' Exhibition Poster
4	Guide to Enter Artworks for the Members' Exhibition
5	Exhibition Entry Form
6	President's Report Publicity, Grants and Gardening Report
7	Art Director's Report Pottery Facilitator's Report Life Drawing Report
8/9	Print Making Co-ordinator's Report
9	Other Business
10-14	The Blue Mountains Art Prize
15	Richard's Musings
16	Poetry Corner
17	What's On?
18	Katherine Kennedy Exhibition

The BMCAC would like to thank graphic designer Katy Pastoors for designing the format of our new Enrolment, Art Prize banners and organising printing and shipment, contributing much of her own time to support our Centre. She is also responsible for our BMCAC advertising card and our Hare St Gallery advertising material. We would also like to acknowledge our President, Alison James, whose wonderful logo designs help make the advertising material so attractive. To produce these materials takes a lot of collaboration and time.

FROM THE EDITOR

Recently Richard and I have been looking at paintings by Chaim Soutine (see p.15). There seem to be no straight or upright lines and marks on his canvases. The compositions are wild conglomerations of swirling and undulating forms. He expressed himself unfailingly and fiercely against conventions, capturing the gestures of life force in a constant wrangling with dissolution. His paintings remind me of Picasso's counselling to always work against, not for...

Demonstrative liveliness of the painted surface is the other command in Soutine's oeuvre, following Bonnard's dictum "art is on the surface". He imbues aliveness even to banal material items such as cutlery. Things are IN the painting, figures are IN the landscape.

At the same time, he depicts a sombre world which is more or less in collapse, already dead or rotting, not only in his carcass paintings. Mortality is a constant theme.

As a painter of crisis, he strikes me as utterly contemporary and relevant in our time.

~~~~~

The results of our Blue Mountains Art Prize exhibition are in. (see pages 10 to 14).

Should you venture into town may I commend the Lindy Lee Retrospective at MCA.

Please send your contributions for "Creations" to [rudich7@dodo.com](mailto:rudich7@dodo.com)

Rudi Christen

### Get in touch with us ! We like to hear from you.

|                  |                                             |              |                                                                                |
|------------------|---------------------------------------------|--------------|--------------------------------------------------------------------------------|
| Alison JAMES     | President & Workshop Coordinator            | 0416 957 688 | <a href="mailto:arty_ali@hotmail.com.au">arty_ali@hotmail.com.au</a>           |
| Ingrid RUSSELL   | Vice President & Arts Director              | 0423 124 473 | <a href="mailto:bmcac.mail@gmail.com">bmcac.mail@gmail.com</a>                 |
| Bronwyn CAMPBELL | Secretary & Pottery Facilitator             | 0411 041 054 | <a href="mailto:a.b.campbell@optusnet.com.au">a.b.campbell@optusnet.com.au</a> |
| Liz BRYDEN       | Publicity, Gardening, Grants & Life Drawing | 0447 474 462 | <a href="mailto:ebryden@bigpond.com">ebryden@bigpond.com</a>                   |

**BLUE MOUNTAINS CREATIVE ARTS CENTRE  
—GLENBROOK**

**MEMBERS' EXHIBITION**

**17TH 18TH OCTOBER**

**9AM—5PM**

**Glenbrook Theatre Hall, Great Western Highway  
Opposite information Centre**



**UNIQUE, HANDCRAFTED  
CERAMICS, ART, MOSAICS AND  
JEWELLERY  
MADE BY LOCAL ARTISTS**

**EXCELLENT OPPORTUNITY TO BUY  
REASONABLY PRICED CHRISTMAS PRESENTS**





# INSTRUCTION for the MEMBERS' EXHIBITION

(replacing our annual clay creations exhibition this year)

HELD AT THE GLENBROOK THEATRE HALL ON THE

**17<sup>TH</sup> – 18<sup>TH</sup> OCTOBER**

Every Blue Mountains Creative Arts Centre member is eligible to enter their own work, whatever medium it may be. (Exhibition Entry Catalogue next page).

Every piece must have a small sticker with your initials, number and price.

You must fill in a catalogue for all your pieces. (Please use catalogue next page)

Please do not hand in a catalogue smaller than A4)

You must be willing to do a shift on the roster at some time over the weekend.

## **Set up Friday 16th October**

*If you cannot drop work off or set up at the allocated time please arrange with a friend to do it for you. Please ring me if you have a specific problem.*

**ARTISTS / MOSAIC ARTISTS** are limited to 3 pieces of work. Your third piece will only be hung if there is space.

**Artists will drop off their work between 3pm and 5pm at the hall.**

Alison James and Ingrid Russell will hang all artwork.

## **POTTERS**

Due to Covid restrictions, the arrangement of tables for potters will mean we may have less space than usual. However, you can leave extra pots in your boxes under your table to replace sold pieces.

Potters will set up their own table allocation.

**Potters setting up time is between 5pm and 8pm.**

**Potters need to notify me how many tables they would like by the Wednesday before the event.**

We will try to accommodate you as much as possible.

If any member has flowers or greenery, please bring them on Friday or Saturday morning. They help make the room look inviting and cheerful

**DUE TO COVID RESTRICTIONS WE WILL NOT SERVE FOOD OR DRINK.**

**THERE WILL BE NO FORMAL OPENING.**

We would be very grateful if you could assist us with forwarding the advertising poster to all your friends and family. Print it off and place it in windows of businesses you may have a good relationship with. Thank you so much.

Any questions or problems please ring me on 0411041054

Bronwyn

**BLUE MOUNTAINS CREATIVE ART CENTRE  
MEMBERS EXHIBITION**

[illegible]

**SIGNATURE** \_\_\_\_\_

PRINTED NAME

**PHONE** \_\_\_\_\_

---

## PRESIDENT'S REPORT *Alison James*

Dear Members,

Each year the art centre looks forward to bringing a set calendar of events to our community and this year was looking a little uncertain due to all the COVID restrictions.

But there are always positives to be found when we are faced with adversity and many of us have discovered that positive is art. Art has the ability to cover so many of the physical and emotional needs of humans. Relaxation, education, self-expression and connection just to name a few.

We had a terrific response to our Art Prize this year, creating a new record for submissions and sales. All money from the entry fees goes back into the art centre thanks to our sponsors generously donating money and prizes.

I'd like to take the opportunity to thank Katherine Kennedy for the incredible job that she has done curating the art prize, along with her tireless team of helpers, Ingrid Russell and Bronwyn Campbell from the committee as well as members Lisa Haldane and Andrea Ketterling. If anyone else also popped in while I wasn't around and helped out thank you to you also. Thank you also to those who sat on duty over the weekend.

Our volunteers who dedicate their time to helping with these events are worth their weight in gold. Without them we wouldn't be able to hold such successful ventures and raise money for the centre.

Hare St Gallery also made terrific sales during the art prize event so it has been a very successful weekend all round.

Our next event coming up is the joint Potters and Members Annual membership and further details have been outlined in Creations. We look forward to another fantastic event.

Happy creating  
Alison James

## PUBLICITY, GRANTS AND GARDENING REPORT *Elizabeth Bryden*

### **Publicity**

The new Art Prize banner was hung prior to our Art Prize exhibition. Due to the Council's restriction of one only advertising banner on the fence per 3 months, the new enrolment banner will be hung at the Centre.

### **Gardening**

There are lots of new plantings, especially natives as I am trying to plant drought tolerant plants. The rain has helped, so I hope this continues throughout summer. The spring colour is giving a lift to the garden and goes well with the more colourful buildings. Overall, we are definitely on Glenbrook's map due to the colourful facade.

I usually tidy up during the week before Council Greenbin collection.

## ART DIRECTOR'S REPORT *Ingrid Russell*

Term 4 enrolment day is Saturday 17th October at the cinema hall in conjunction with the members exhibition, 10:00 am until 1:00 pm.

On line enrolments have already been coming in steadily. Classes start Monday 19th October.

We will continue with COVID precautions in term 4.

The art prize hanging went smoothly on Tuesday and Wednesday. Thank you to Katherine Kennedy for another beautiful exhibition and to all the helpers who turned up. The Art Prize really looks great.

The Hare St Gallery 3rd quarter starts on the 3rd October with three new participants. Marian Pollpeter's ceramics, Christine Hyde's art works and Andrea Ketterling's mosaics are a welcome addition to the gallery. There's great Christmas shopping in the gallery!

If you are interested in joining the co op gallery please email [bmccac.mail@gmail.com](mailto:bmccac.mail@gmail.com) for an application. Conditions have changed to \$10 joining fee and \$30 per quarter plus 10% of sales.

## POTTERY FACILITATOR'S REPORT *Bronwyn Campbell*

We have had a problem with Mother Bear kiln. After a good look I think the thermocouple might need replacing, so Mother Bear is out of commission for the moment. As soon as I can, I will make arrangements to have it fixed.

We are in desperate need of new setters, so I would be very grateful for anyone to contribute new ones to the kiln room. Make them out of white raku clay – slab roller – various sizes would be a wonderful help. Remember to keep them flat during drying and keep turning them to ensure they stay flat. Once glaze has dripped onto a setter it is no longer useful and needs to be thrown out. Please do not return it to the box. I recently culled a lot of damaged setters, so new ones are essential. If you make a large piece and are using an unfamiliar glaze, it would be really helpful if you made your own setter for your piece.

Please read the details about our Member's Exhibition carefully. I have included a catalogue for you to print off.

Hoping to see some wonderfully creative pots at the Exhibition.

Bronwyn

## LIFE DRAWING REPORT *Liz Bryden*

Problems have arisen re numbers and unreliability of models. I have some ideas on how to deal with this but think discussion should be left until after our Annual Members' Exhibition.

Life Drawing to continue as normal until December.

## **Blue Mountains Print Prize**

The Blue Mountains Print Prize started strong in 2019 though was this year postponed as sponsorship was to be obtained during the initial lock-down phase in NSW due to the COVID19 pandemic. The committee has since decided to progress this event into a Biennale prize.

Printmakers are now encouraged to save the following important dates;

Exhibition: Friday 25<sup>th</sup> Saturday 26<sup>th</sup> Sunday 27<sup>th</sup> June 2021

Artwork Bump-In (drop off): Sunday 20<sup>th</sup> June 2021 (10-2pm)

Collect your work: Sunday 27<sup>th</sup> (5pm).

There is now a BLUE MOUNTAINS EMERGING ARTIST AWARD. This new prize will be awarded to a local artist who is young or an artist who is at the beginning of their professional career though displays a unique and promising visual style. This artist will be awarded a future, fully sponsored exhibition at the Blue Mountains Creative Arts Centre.

## **Sponsorship Callout:**

We are now accepting sponsorships for the following Printmaking awards (open to in-area and out-of-area artists):

**Overall Prize Winner - \$1000**

**Second Prize Winner**

**Third Prize Winner**

**Highly Commended**

**EMERGING ARTIST AWARD – (NEW)**

**Youth Prize 1<sup>st</sup> Prize – Mentorship with Katherine Kennedy**

**Youth Highly Commended**

**JUDGE: YET TO BE NAMED**

Contact [katherine.kennedy6@hotmail.com](mailto:katherine.kennedy6@hotmail.com) for a sponsorship information package.

Printmakers, please remember to also save the date of the Blue Mountains Art Prize as printmakers have been awarded prizes for two events thus far, with the judging for the 2020 prize occurring tonight! 17<sup>th</sup> – 19<sup>th</sup> September 2021 (Bump-In 12<sup>th</sup> September 2021).

**UPDATE: 2021** Blue Mountains Print Prize overall adult winner, Heather Dunn, has postponed her awarded solo exhibition at Gallery ONE88 until either 2021 or 2022 due to relocating to Western Australia in the interim—due to a tumultuous 2019. The dates of her exhibition will be confirmed at a later date. Youth First Prize Winner, Claudia Caldis, has developed a lovely body of work to be shown at a later date at Nepean Creative and Performing Arts Centre (date to be confirmed).

(cont. next page)



## **In Other Printmaking Related News**

Blue Mountains Printmakers are uniting and working together to develop the Blue Mountains Print Circle. This circle will map the studios in the mountains dedicated to private practice, open access opportunities, workshops and classes all in the field of printmaking. Initially, ten members of this group will present work during October 2021 in an exhibition at Gallery ONE88 Fine Arts, Katoomba—21<sup>st</sup> October to 1<sup>st</sup> November 2021. There are printmakers of all persuasions forming this group with numbers now exceeding the initial 10. Stay tuned for details regarding this exciting new venture.

## **Print Room at Blue Mountains Creative Arts Centre**

We would like to extend our gratitude to Caitlyn Hughes of Hughes Studio: Woodford Academy in Woodford. Caitlyn has kindly donated screen printing materials and equipment to our centre for our members to use.

## **OPEN ACCESS HAS RE-OPENED.**

Please note that the print studio open-access has resumed, outside of class and workshop sessions and adhering to C19 operational requirements, limited to 1 artist at a time or 2 close peoples. Please remember to book by contacting Katherine Kennedy at 0402 470 231. Remember to use this space you must first undergo an induction.

## **Adult Printmaking Classes-Term 4**

We have an enrolment in the Term 4 Adult printmaking class. This class will go ahead when our number reaches 4. Please see the website for details and follow due process to enrol if you are interested.

## **OTHER BUSINESS**

### **Builders Report by David Russell**

A new front door has been installed in the main room. It looks great in its coat of green. The exhibition room has received a fresh coat of paint just in time for the Art Prize exhibition.

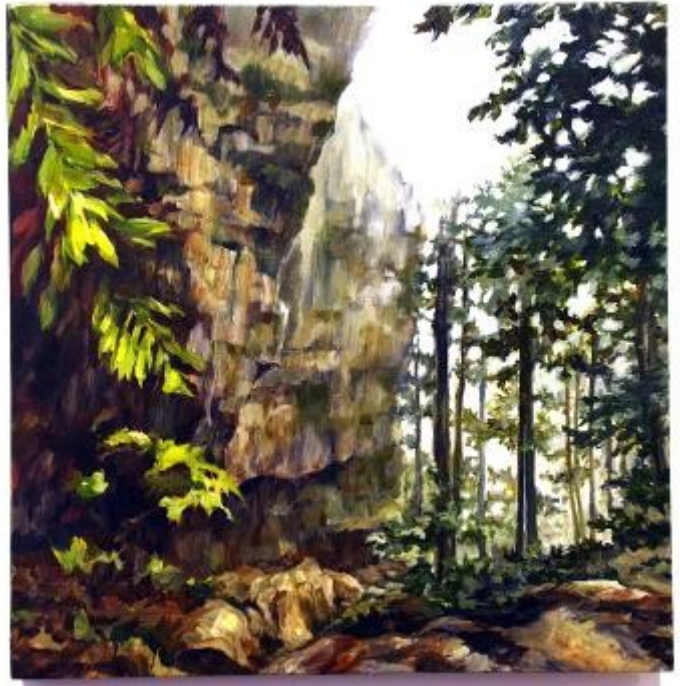
David asks that gallery members please turn the key in the gallery door to close it. Slamming it shut without turning the key first is damaging the edge of the door.

**THE JADE STUDIO IS AVAILABLE FOR RENT IN 2021. IF YOU ARE CONSIDERING RENTING THE STUDIO, PLEASE LOOK FOR DETAILS ON OUR WEBSITE.**

## The Blue Mountains Art Prize



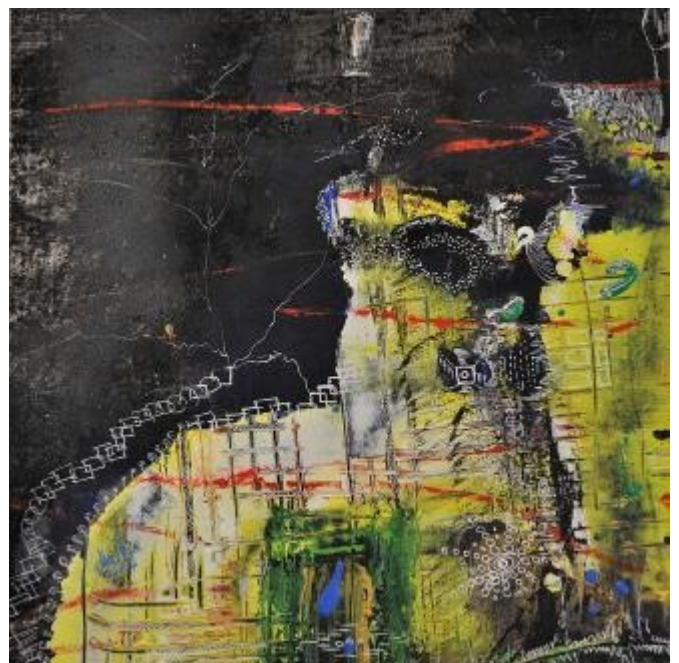
**April White** receiving the Barbara Dahl Prize, awarded for "Grand Canyon" (acrylic on board).



**Robert Linigen**, ceramic artist, was awarded the Roy Brook Prize for his "Weed Ash Glazed Teapot".



**Meri Andric** accepting The Sadie Foster Prize for "Deception No 1", mixed media on paper.





## THE BLUE MOUNTAIN ART PRIZE CERAMIC ENTRIES

Tea pots were the winners this year with Robert Linigen taking out the Roy Brooks award and Liz McQueen taking out a commended award.

Photographs by Alan Campbell



**Winner of Roy Brooks Award**  
Robert Linigen



**Commended**  
Liz McQueen



Bronwyn Campbell  
Butterfly eggs



Ingrid Russell  
Remnants of a collective abandonment



Michaela Kryzysztan  
Renewal



Kelcie Bryant-Duguid  
Burnt Banksia



Alison James  
2020



Bronwyn Campbell  
Cockatoo tea pot



Judith Werner  
Can we save it



Andrew Garnett  
Road toll





**Christine Stickley** won the Mosaic Prize for her "Regional Honeyeater"



The "Builders Prize" judged by our two volunteer builders, David Russell and David Attwood, was awarded to

**Dakota Smith** for her watercolour, "On My Own".



A Highly Commended award went to **Jack Buckley** (embroidery on drawing)

## Young BMCAC Artists



1st Prize

**Amber Elliot**

"My Cat"



2d Prize

**Isabella Rossiter**

"Wattle"



3rd Prize

**Isabella Rossiter**

"A Cat"



...and many, many more.

---



**Gaspare Carrozza**

Pebbles 2

Watercolour on Paper

(Highly Commended)



**Christine Stickley**

Baby Kingfisher

Ceramic Work



**Fleur Stevenson**

Traversing the Hawkesbury

Acrylic

## Richard's Musings

Looking at over 200 Soutine paintings on YouTube, Rudi and I realised he could be a mirror for the crisis age we live through. He was mortal, he was dramatic, he was writhing with an energy, as if his world seemed coming apart, not only at the seams but all over. He was serious in this painful becoming like birth pangs, but his generosity of matter and spirit seemed unbounded, an exultation. Did he depict an underlying crucifixion of nature or was it, through his materiality an upward thrust into an inevitable cataclysm?

He lived through a tumultuous period, the son of a tailor, brought up as the 10<sup>th</sup> of eleven children in a Jewish ghetto, in hostile Czarist Russia. But he managed to extract himself to study art and migrated to France in 1913. The following years brought WW1 and the Spanish flu epidemic before his work was appreciated. Surviving horrific times, he remained melancholy. Then, during WW2 he had to run from the Gestapo and died of a burst stomach ulcer in 1943 - a lonely, rude artist, a tragic, handsome one.

Like him we could follow our star to the end and shun the pressures of fashion, the doing of "should" instead of following our true likes and needs that our real personalities long for.



Chaim Soutine, Landscape at Cagnes (La Gaude) c. 1923



## Poetry Corner

### **CEZANNE: THE BLUE VASE**

*The restless eyes that dart and wander,  
the ropes and nerves that twist and turn  
in image of the world's distorted ways,  
the eyes that gaze in solitary pain  
through light that bites like acid  
at the face of things,  
find here their resting place.  
A blue vase on a table  
before a wall of blue  
drawn taut by planes;  
the soft curves of its shimmering form  
begin a fragrant song  
that in rich tones rises through leaves and flowers  
heavy with life.  
Irises raise their delicate purple heads  
above the crowd;  
thick textured leaves add green shades of darkness;  
cyclamen dance like butterflies about the vase,  
never landing,  
white wings beating back the light;  
and edible, ecstatic, more fruit than flower,  
are four balls of pure, burning red:  
this is the centre,  
the triumph over death.*

*All this one man has given,  
labouring with his brush close to the edge of time:  
he tilts the scales, laden with physical things,  
into the void of wonder:  
A concentrated tranquil place  
where light is truth that clings to shapes  
and in shades of colours lingers,  
and gives to tables, apples, plates,  
a sure existence by its kiss and firm embrace;  
A place where all may dwell who truly love,  
and start to see things as they are.*



Paul Cezanne, The Blue Vase, 1889  
oil on canvas, 61 X 50cm

## WHAT'S ON ?

Workshops, Galleries, Exhibitions, Prize Entries, Coming Events

### IMPORTANT DATES

|                              |                                                                                         |
|------------------------------|-----------------------------------------------------------------------------------------|
| Sat. 17 October              | Enrolment for Term 4                                                                    |
| Fri. - Sun. 16, 17 & 18 Oct. | Members Exhibition including ceramics and other crafts<br>Official Opening Fri. 7.30pm. |
| Thu. 5 Nov. 7.30pm           | Next committee meeting in the purple building at Hare Street.                           |

### The following WORKSHOPS have been scheduled

|            |                   |                |
|------------|-------------------|----------------|
| 10 October | Pip Bishop        | Dying workshop |
| 11 October | Christopher Vidal | Art workshop   |

Bruce Dwyer has enquired about a proposed pottery workshop.

**Please check the BMCAC website for up-to-date details.**

**ANNETTE LARKIN FINE ART**

Suite 4, 8 Soudan Lane, Paddington

Phone: 02 9332 4614

**Robert Klippel on Paper, 1950-1963**

until 17 October



Robert Klippel. Untitled, 1952



SOCIAL DROUGHT II : EXCAVATING ISO

# KATHERINE KENNEDY

On Exhibition

15<sup>th</sup> – 26<sup>th</sup> OCTOBER

Exhibition Celebration  
Saturday 17<sup>th</sup> October 2-3 & 3-4pm  
RSVP via email essential

In this exhibition you will find tensions between light and dark, wet and dry and a childlike love of discovery. This divergent exhibition presents paintings, framed assemblages of found objects, sculptural assemblages, lamp designs, photography, printmaking, hand-made substrates and installation. This varied approach to arts practice is representative of Katherine's navigation of a continued theme and this time through the lens of a tumultuous and illuminating 2019-2020.



188 Katoomba Street Katoomba NSW 2780  
Ph 02 4782 1900

e: [info@galleryone88finearts.com](mailto:info@galleryone88finearts.com)  
w: [www.galleryone88finearts.com](http://www.galleryone88finearts.com)

A PDF of the Catalogue can be sent out by email from the 15th October. Also, if you wish to attend the exhibition opening, please RSVP. Please email Gallery ONE88 to request the PDF & /or to secure your attendance at the celebration sessions (2-3 or 3-4)

Email: [admin@galleryone88finearts.com](mailto:admin@galleryone88finearts.com)