



BLUE MOUNTAINS CREATIVE ARTS CENTRE NEWSLETTER

Nov. - Dec. 2021

WEBSITE: [www.bmcac.org.au](http://www.bmcac.org.au)

FACEBOOK: [bmcac](https://www.facebook.com/bmcac)

[bmcacsaturdaypotters](https://www.facebook.com/bmcacsaturdaypotters)



'Louise's Christmas Salad' by Katrina Jago



## CONTENTS

3	President's Report, Pottery Facilitator's Report
4	Art Director's Report
5 to 9	Reviewing our ART PRIZE exhibition
10	Christmas Salad Recipe
11	Poetry Corner
12 to 14	What's On?
15	Sponsors



Merry Christmas from the two Davids who report the new path is progressing well with flag stone work on the way.

## EDITOR'S NOTE

After another year of Covid harassment Christmas is the perfect occasion to gather up all the loose ends and reconnect. And, with courage and some continued healthy caution we can regain heart for a fresh and more coherent start in 2022.

To get us on the way try Louise's recipe for a delicious Christmas salad (p. 10).

And, apart from looking back at our own Blue Mountains Art Prize Exhibitions (p. 5 - 9), there are many fine shows happening at local galleries (p. 13 -14), and last but not least, the Pop-Up Exhibition at our BMCAC Jade Yurt (p. 12).

Please continue posting your thoughts about art and its practice to [rudich7@dodo.com](mailto:rudich7@dodo.com).

Wishing you a happy and healthy Christmas and holiday.

Rudi Christen



### Get in touch with us ! We like to hear from you.

Alison JAMES	President & Workshop Coordinator	0416 957 688	<a href="mailto:arty_ali@hotmail.com.au">arty_ali@hotmail.com.au</a>
Ingrid RUSSELL	Vice President & Arts Director	0423 124 473	<a href="mailto:bmcac.mail@gmail.com">bmcac.mail@gmail.com</a>
Bronwyn CAMPBELL	Secretary & Pottery Facilitator	0411 041 054	<a href="mailto:a.b.campbell@optusnet.com.au">a.b.campbell@optusnet.com.au</a>
Liz BRYDEN	Gardening, Grants & Life Drawing	0447 474 462	<a href="mailto:ebryden@bigpond.com">ebryden@bigpond.com</a>
Katherine KENNEDY	Publicity & Printmaking Coordinator		<a href="mailto:katherine.kennedy6@hotmail.com">katherine.kennedy6@hotmail.com</a>

## PRESIDENT'S REPORT *Alison James*

Hello members,

We've made it!!!! We've finally reached the end of a year that seemed like it would go on forever and that we would all be stuck endlessly tidying, renovating, gardening, creating art or going stir crazy in our own homes.

Let's finally kick back and enjoy the holiday season by catching up with family and friends, enjoying the little things in life that make us laugh and smile, and we will see you all next year for a fresh start.

May you all have a merry Christmas, happy holidays and a great new year. Stay safe everyone!

Your President

Alison James

## POTTERY FACILITATOR'S REPORT *Bronwyn Campbell*

The Monday and Tuesday drop-in groups have been running to capacity most nights. I returned the borrowed wheel last week and I have set up our good extra two wheels in the store room for overflow, but as yet have not had to use them. Michael's group ranges from 3 to 4, so he does have some room in his Saturday group.

I tried really hard on three separate occasions to get Baby Bear to fire this last week but it continually turns itself off after some time. I was hoping by some miracle if I spoke to it nicely it would fix itself but no luck. I will try to get the electrician to come next week, otherwise it will have to wait until the New Year.

Thank you to Alan Campbell who sanded the boards given to us by Bruce Dwyer. I have put them on the shelves for extra storage.

The props have proved too heavy for the metal basket shelving system, so we will need to come up with another solution. With the money we have gained from the sale of the wheel and the kiln we will be able to create a new shelving system – plan yet to be worked out.

**Bronwyn's tip:** Save the shoulder ribbons you cut off women's tops and the ribbons/ cords/ leather that price tags are attached to. They are excellent for tying your pottery tags to special pieces.

## ART DIRECTOR'S REPORT *Ingrid Russell*

Term 4 has ended for most classes. Pottery classes still have two weeks to go.  
I'm expecting the Term 1, 2022 timetable to be live by early January. Enrolments will open as soon as the timetable is up and will end February 4.  
Classes start February 7. There will be no enrolment day as all enrolments are now online.

### **Term dates for 2022**

Term 1: February 7 to March 1  
Term 2: May 2 to June 24  
Term 3: July 25 to September 16  
Term 4: October 17 to December 9.

Cut off for enrolments is the Friday before start of term.

### **Hare St Gallery Report**

Sales have been average. Hopefully they will pick up during December as we count down to Xmas.  
The Gallery will close for Xmas and reopen January 29.  
2022 quarters will be 12 weeks each except for the 4th which will be 13 weeks.

1st quarter: January 29 to April 17  
2nd quarter: April 23 to July 10  
3rd quarter: July 16 to October 2  
4th quarter: October 8 to December 18.

### **Art Prize:**

**JUDGES :** Leonard Smith ( Ceramics) Julie Simmons, Michael Powe (Art), Caitlin Hepworth (Mosaics).

#### **PRIZES and SPONSORS:**

The Main prize is (open)	\$2,000 sponsored by Michael Powe
The Ceramic Prize	\$500 sponsored by Councillor Brendan Christie
The Sadi Forster prize (open)	\$500 sponsored by Stewart Ayers
Indigenous Prize	\$250
The Barbara Dahl Prize (open)	\$250 sponsored by Susan Templeton
Youth Prize	\$250 (voucher) Black Door Gallery
Mosaic Prize	\$150 (voucher) sponsored by Smolti
Builders Accolade (open)	\$150 sponsored by BMCAC
Commended 3d	\$100 Stella's Gallery
Commended Art Prize	\$50 (voucher) Picture Framing Warehouse
Commended Watercolour	\$50 sponsored by Gus Carrozza
1st Children	\$ 50 sponsored by Bronwyn Campbell
2 <sup>nd</sup> Children	\$25 sponsored by Alison James
3 <sup>rd</sup> Children	\$25 sponsored by Alison James
3D Prize	\$50 sponsored by Eckerley's Shop

# Reviewing our ART PRIZE exhibition

## of 11 –12 December

Here's the link to the winners list:

<https://www.bmcac.org.au/art-prize/blue-mountains-art-prize-winners/>



### Overall Winner

\$2000 sponsored by  
Anala Art Advisory

**Lilianne Ivins**  
*Hidden Garden*  
Oil on board

20cm x 15cm



### The Sadie Foster Prize

\$500 sponsored by  
Hon. Stuart Ayres M.P.

**Ingrid Russell**  
*A Knot in Time*  
Acrylics on canvas

30.5cm x 30.5cm





## Roy Brook Ceramic Prize

\$500 sponsored by Blue Mountains  
Councillor Brendan Christie

**Bronwyn Campbell**

*Earth, Ash and Fire*

Stoneware Shino/Ash

15cm x 10cm



## Barbara Dahl Prize

Sponsored by  
Hon. Susan Templeman

**Jeannie McInnes**

*Blue Lagoon*

Book: etching, cyanotype

15.5cm x 24cm x 2cm





## Mosaic Prize

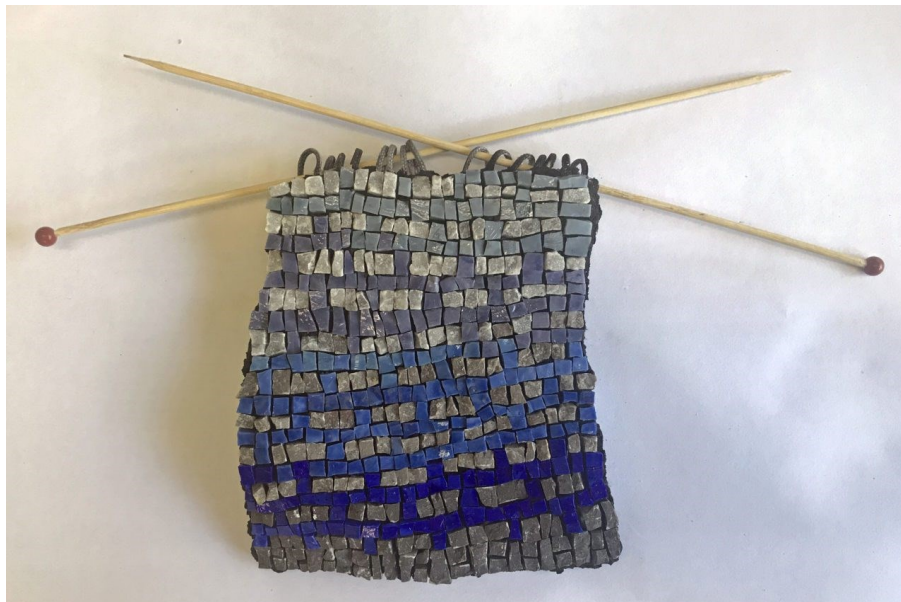
\$150 voucher  
sponsored by  
Smalti Australia

**Andrea Ketterling**

*Mycelium*

Gold and smalti on  
hand-formed sub-  
strate

24 cm x 18cm x 2cm



## Builder's Accolade

\$150 sponsored by  
BMCAC

**Marian Shapiro**

*Casting Off*

Smalti, marble, cord knit-  
ting needles on hand  
made substrate

15 cm x 14 cm



## Highly Commended

\$100 sponsored by  
Stella's Gallery

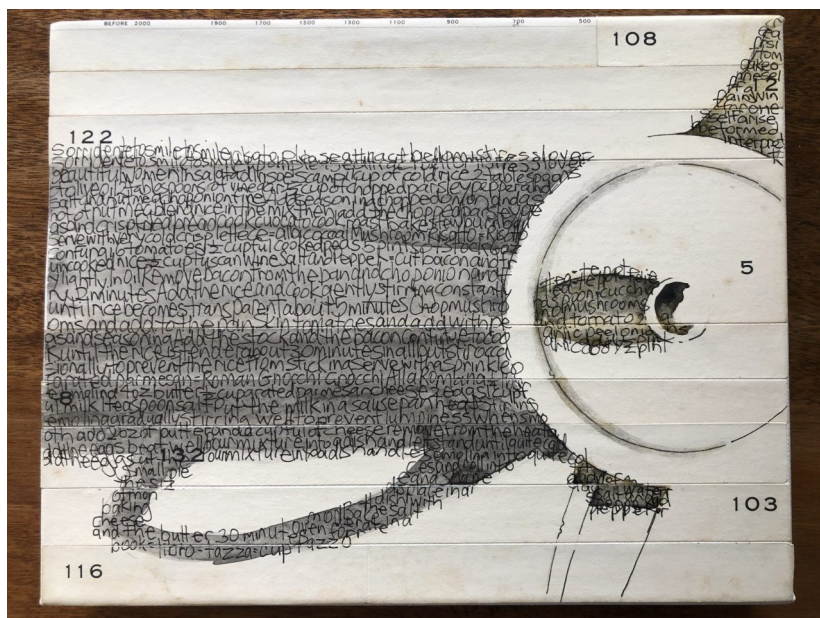
**Alison James**

*Ruins*

Stoneware, Oak,  
Natural Fibre

32cm x 30cm x 9cm





## Commended/ Watercolour

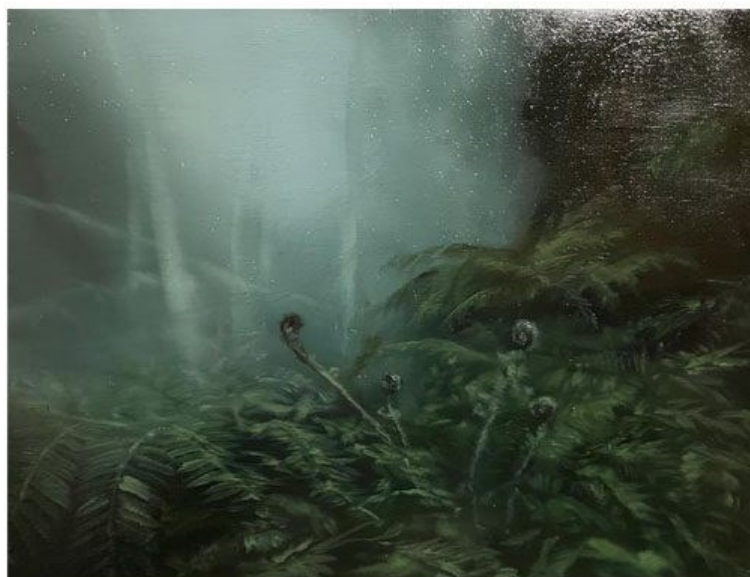
\$50 sponsored by  
Gasparre Carrozza

**Elisabeth Thomas**

*Risotto on End Papers*

Watercolour and ink on  
paper/canvas

25.5cm x 20cm



## Commended

\$50 voucher sponsored by  
The Picture Framing  
Warehouse

**Lilianne Ivins**

*Calling Through The Mist*

Oil on board

20cm x 15cm



## Youth Prize

\$250 sponsored by  
The Blackdoor Gallery

**Joni Gersbach**

*paralysed mind*

Pen on paper

21.5cm x 27cm





Ingrid Russell with her winning painting  
'Knot in Time'



**Jeannie McInnes** *In the Mist*  
Polymer Etching, 21cm x 30cm  
[Commended](#), \$50 voucher  
sponsored by Ekersley's Penrith



Vase by Eloise



Bronwyn Campbell with her two ceramic entries.  
'Earth , Ash and Fire' with shino and ash glazes  
won the Roy Brook Ceramic Prize.

# Louise's Colourful Christmas Salad

## Ingredients

- Half a small Butternut Pumpkin
- 1 Red Capsicum
- 1 Mango
- 1-2 Avocados
- Lettuce (for plating)
- Coriander (chopped leaves for garnish)
- Olive oil – 1 tablespoon
- Sweet Chilli Sauce - 4 tablespoons
- Rice Wine Vinegar – 1 tablespoon
- Ketjap Manis – 1 teaspoon (to taste). It is possible to substitute with ½ tea spoon soy sauce + ½ teaspoon honey

## Method

- Dice butternut pumpkin into chunks approx. 1.5 cm. Toss in olive oil and roast at 180°C until golden but not so soft it collapses. Allow to cool.
- Meanwhile take the red capsicum and blacken the skin over flame or under hot grill. Cool, (in paper bag if available), peel and slice onto thin strips
- Dice the mango and avocados to same size as pumpkin
- Prepare the dressing by combining the sweet chilli sauce, rice wine vinegar, ketjap manis. Mix well.
- Place pumpkin, capsicum, mango and avocado in a bowl and gently mix together with the dressing
- Serve on top of a bed of your favourite lettuce and sprinkle with chopped coriander

Great Xmassy colours!

Louise



## Poetry Corner

Phillip Martin (1927–2014)

### *Affirmation*

To be given to see in painting a  
work that is not merely founded on  
traditional concepts or tied to  
the security of an ideal or a cause, that is not didactic,  
is outside of competition, free of plagiarisms, decisions,  
conclusions, theories; that is anonymous yet vibrating  
in uniqueness, that exists in action and not in reaction,  
brings love into a space where there was seen only  
violence, stagnation, confusion, mediocrity or indifference,  
that is intentionless,  
that is open, not final,  
that enquires of us, challenges, putting all in question,  
that is ever in the present,  
that is of itself created, new,  
that is vulnerable,  
inexhaustible in the possibilities of forms that it may engender,  
removed from fantasy and the nets of dream and memory,  
religious in its celebration of the sacredness of life,  
not opposed or imposing, that collaborates in the  
lifestream, sacrifices to the essential, marches on the  
royal wide road of yes -  
and is wholly, everlastingly UNKNOWN -  
and all this, seemingly, with no effort whatsoever;  
that  
would be a perception of great beauty.



Roberto Matta, The Vertigo of Eros, 1944

## WHAT'S ON ?

Workshops, Galleries, Exhibitions, Prize Entries, Coming Events

## IMPORTANT DATES

**Next Committee Meeting:** Thu. 3 Feb. 2022, 7.30pm

**Member's Exhibition 2022:**

29<sup>th</sup> April 1pm- 9pm, 30<sup>th</sup> April 9am – 5pm, 1<sup>st</sup> May 9 am – 5 pm

**Clay Creations exhibition 2022**

14<sup>th</sup> October 1pm -9pm, 15<sup>th</sup> October 9am – 5pm & 16<sup>th</sup> October 9am – 5pm

**JADE YURT - BMCAC**

# POP-UP EXHIBITION

**NATIONWIDE CURATING**



Saturday 18th December 10am – 4pm

Sunday 19th December 10am – 4pm

Monday 20th December 10am – 4pm & 6pm – 7pm

Tuesday 21st December 10am – 4pm & 6pm – 7pm

Wednesday 22nd December 10am – 4pm & 6pm – 8pm

Thursday 23rd December 10am – 4pm & 6pm – 8pm

Friday 24th December 10am – 5pm

Corner of Hare & Moore Street, Glenbrook NSW 2773  
Blue Mountains Creative Arts Centre

[info@nationwidecurating.com](mailto:info@nationwidecurating.com)

[www.nationwidecurating.com](http://www.nationwidecurating.com)

0402 470 231





# BLUE MOUNTAINS CULTURAL CENTRE

30 Parke Street, Katoomba 2780

Gallery and Shop: Monday – Friday 10am – 5pm, Saturday + Sunday – 10am – 4pm

## Claire Healy & Sean Cordeiro: Post-haste

30 October 2021 – 16 January 2022



The exhibition Post-haste showcases the past decade of works by creative duo Claire Healy and Sean Cordeiro, exploring themes of obsolescence, collective endeavour, and the place of the individual within complex systems. The artists are concerned with Paul Virilio's concept of Dromology: investigating how the speed at which something happens may change its essential nature, and that which moves with great speed quickly comes to dominate that which is slower.

*Art is not a mirror to reflect the world, but a hammer with which to shape it.*

**Vladimir Mayakovsky**

# BRAEMER HOUSE & GALLERY

104 Macquarie Road, Springwood 2777

Gallery Hours: Monday – Friday 10am – 5pm, Saturday + Sunday – 10am – 4pm

## Braemar Volunteers 2021

9 Dec – 16 Jan



NATALIE SHARPE *Backyard Beauties*, mixed media on canvas, 35 x 35 cm

Braemar Gallery presents the Annual exhibition of works by Braemar Gallery volunteers. Bringing over 40 dedicated volunteers together to share their stories as they reflect on their year of 2021 and how it has impacted the artist's imagination and output.

The exhibition always brings a unique gathering of local art and artists from the experimental to the classical artistic genres, from professional to amateur artists. An amazing collection of 2D and 3D artworks, there is something for everyone.

*Art is a particular madness where you are using a means of communication, to say something that other people hadn't heard, or hadn't perceived, or had repressed.*

**.John Chamberlain**



# PENRITH REGIONAL GALLERY

86 River Road, Emu Plains

The Gallery is open daily from 10am – 3.45pm

## ARCHIBALD PRIZE 2020 REGIONAL TOUR (This exhibition is free)

**Australia's foremost portraiture prize** (until 9 January)

Awarded to the best portrait, 'preferentially of some man or woman distinguished in art, letters, science or politics, painted by any artist resident in Australasia', the Archibald Prize is a who's who of Australian culture, from politicians to celebrities and from sporting heroes to artists.

Prestigious and controversial, the Archibald Prize is Australia's foremost portraiture prize. The Archibald Prize awards \$100,000 prize money to the winning artist.

In its 100th year, the Archibald Prize has been held since 1921. An open competition, the Archibald Prize is judged by the trustees of the Art Gallery of New South Wales. Entries to the Archibald Prize must be completed in the past year with at least one live sitting with the subject.

Finalists are exhibited at the Art Gallery of New South Wales before embarking on a regional tour – with the exhibition heading to Penrith Regional Gallery from 20 November where it will stay across the summer period until 9 January.

## LINE WORK: RIVERS OF THE BASIN

**Sue Pedley and Phaptawan Suwannakudt** (until 9 January)

*Line Work* refers to an iterative and ongoing collaboration between Sydney-based artists, Sue Pedley and Phaptawan Suwannakudt. Phaptawan and Sue have been producing a series of layered and experimental drawings using a variety of materials, titled *Line Work (#1 – #27)* since March 2019. Through repeatedly working over marks made by the other, they are able to bring lived experience and individual perspective to the resulting artworks.

*Line Work: Rivers of the Basin* is a response to the inherited legacies of the site where Penrith Regional Gallery is situated, on the banks of the Nepean River at Emu Plains. The exhibition occupies the four rooms, hallway and veranda of the Lewers House Gallery, once the home and studio of Margo and Gerald Lewers, on the land of the Darug people.

Both historically and in the last year, Emu Plains has felt the impact of extreme heat waves, fires and floods. The 19<sup>th</sup> Century House, and surrounding gardens on the banks of the river hold the memories of families and communities who have lived and surviving natural disasters, as well as the lasting impact of colonisation and urbanisation.

Through this new body of work, the artists explore the four elements of matter; water, wind, earth and fire from a multilayered cultural perspective. Natural fibres including banana leaves and bamboo from the Lewers Garden, have been invoked by the artists to create drawings and rubbings, as well as sculptural and installation works. At its crux, Line Works is an acknowledgement of the interwoven and connected lines that marcate and mediate our lives, between the past and now.

# Blue Mountains Art Prize

## Proudly sponsored by



The Hon. **Stuart Ayres** MP   
Member for Penrith  
Minister for Jobs, Investment, Tourism & Western Sydney 

**Cr. Brendan Christie**



  
**SUSAN TEMPLEMAN** MP  
FEDERAL MEMBER FOR MACQUARIE

