



BLUE MOUNTAINS CREATIVE ARTS CENTRE NEWSLETTER October 2023

WEBSITE: www.bmcac.org.au

FACEBOOK: [bmcac](#) & [bmcacsaturdaypotters](#)

INSTAGRAM [lifedrawing_glenbrook](#)

BMCAC MEMBERS' Christmas Exhibition

LIVE LOCAL

LOVE LOCAL

BUY LOCAL

GLENBROOK THEATRE HALL
OCTOBER 21ST & 22ND
 SAT 9AM-5PM
 SUN 9AM-4PM
WWW.BMCAC.ORG.AU

Our 'Hare Street' Centre is located on the traditional homeland of the Dharug and Gundungurra people. We recognize and pay respect to the traditional custodians of country past, present and emerging.

CONTENTS

3 & 4	Instructions for Members' Christmas Exhibition
5	Catalogue for Christmas Exhibition
6	Labels for Christmas Exhibition
7	President's Report, Art Director's Report
8	Pottery Facilitator's Report
9	Printmaking News
10	Gardening Report, Workshop Coordinator's Report, Other Reports & Business
11	Poetry Corner
12-16	What's On

CALENDAR OF BMCAC EVENTS

DATE EVENT

Mon. 16 Oct. - 8 Dec.	TERM 4
Fri. 20 - Sun. 22 Oct.	Member's Christmas Exhibition
Thu. 2 Nov. 7.30pm	Committee Meeting

Events are at the Centre except
Member's Christmas Exhibition
at the Glenbrook Theatre Hall.

EDITOR'S NOTE

Already our last exhibition for the year is being prepared. As the frontpage shows it's the Members' Christmas Exhibition to be held on the weekend of 21 & 22 October. Every BMCAC member is able to enter their artwork or pottery for free! Please follow the instructions on the next page to have your pieces included and use the catalogue and labels to identify your works.

Much excellent art can be seen in galleries near and far. Meet other artists and find inspiration for your own work by visiting some. 'What's On' (pages 12-16) provides a summary of exhibitions happening in our area and some more in Sydney.

Recent mosaics by BMCAC member Marian Shapiro will be on show at Braemer House from 26 October till 19 November.

And, once more I wish to draw attention to the brilliant work of Elisabeth Cummings being shown at the National Art School until 21 October:

[Radiance: the art of Elisabeth Cummings | National Art School \(nas.edu.au\)](http://nas.edu.au)

Monday to Saturday, 11am–5pm
156 Forbes St, DARLINGHURST

Please send contributions for 'Creations' to:

rudich7@dodo.com

Rudi Christen

Creations' Editor

Get in touch with us ! We'd like to hear from you.

Alison JAMES	President & Workshop Coordinator	0416 957 688	arty_ali@hotmail.com.au
Ingrid RUSSELL	Vice President & Arts Director	0423 124 473	bmcac.mail@gmail.com
Bronwyn CAMPBELL	Secretary & Pottery Facilitator	0411 041 054	a.b.campbell@optusnet.com.au



BLUE MOUNTAINS CREATIVE ARTS CENTRE MEMBERS' CHRISTMAS EXHIBITION

AT THE GLENBROOK THEATRE HALL ON THE

21st and 22nd OCTOBER

Every Blue Mountains Creative Arts Centre member is eligible to enter their own work, whatever medium it may be and whatever stage you are at in your artistic development. Ask a committee member if you would like advice about the work you wish to put in the exhibition.

There is no entry fee, however, we take 20% on sales.

Every piece must have a small white sticker with your initials, number, and price (e.g. BC1).

You must fill in attached catalogue for all your pieces. (Please do not hand in a catalogue smaller than A4)

You must be willing to do a shift on the roster at some time over the weekend, preferably 2 hrs. A roster sheet will be provided when you drop off work.

Set up Friday 20th October

If you cannot drop work off or set up at the allocated times below, please arrange with a friend to do it for you. Please ring me if you have a specific problem.

You may set up Saturday morning from 8:30 but please notify me.

ARTISTS / MOSAIC ARTISTS

are limited to 3 pieces of work. Your third piece will only be hung if there is space. A table and cradle will be supplied for **Life Drawers** to display portfolios and work not hung.

Artists will drop off their work between 12pm and 2pm at the hall.

Alison James, Gus Carrozza and Jeannie McInnes will curate the art.

Artists, please make sure you bring your artwork labelled with name, name of artwork and the price. Find labels at the end of this article on page 6.

POTTERS

Potters setting up time is between 2pm and 4pm.

Potters will set up their own table allocation, unless other arrangements have been made. Tables, black tablecloths and cork bricks will be provided. The tables are 150cm long by 75cm wide.

Please notify me via text or email before Wednesday 18th how many tables you require.

We will try to accommodate you as much as possible. Extra work can always be stored under the table to bring out when pieces are sold. It is ok to only have 2 or 3 pieces – just let me know.

Cont. next page

If any member has flowers or greenery, please bring them on Friday or Saturday morning. Our garden queen will be away, so we need some help on this front. We can provide black buckets. It all helps to make the room look inviting and cheerful.

Due to some time constraints, the committee decided, for this particular exhibition, that we would not hold a formal opening. We will open the doors to the public at 9:00am on Saturday. If any of you would like to bring some nibbles to leave in the kitchen for those on duty that would be very much appreciated. Coffee, tea, sugar and milk will be provided. On Sunday we will begin to pack up at 4pm so we would appreciate all hands on deck so we can be out of the theatre by five pm.

The beautiful poster on our frontpage was designed by Alison for our advertising. If you can print some copies and distribute where ever you think might bring in customers, that would be so much help in getting the word out.

Any questions or problems please ring me on 0411041054

Email: a.b.campbell@optusnet.com.au

Good luck everyone. Here's to a successful exhibition.

Bronwyn

BMCAC secretary/ BMCAC Pottery Facilitator



"The real voyage of discovery consists not in seeking new landscapes, but in having new eyes."

Marcel Proust



Members' Exhibition

Title: _____

Medium: _____

Code: _____ Price: _____



Members' Exhibition

Title: _____

Medium: _____

Code: _____ Price: _____



Members' Exhibition

Title: _____

Medium: _____

Code: _____ Price: _____



Members' Exhibition

Title: _____

Medium: _____

Code: _____ Price: _____



Members' Exhibition

Title: _____

Medium: _____

Code: _____ Price: _____



Members' Exhibition

Title: _____

Medium: _____

Code: _____ Price: _____



Members' Exhibition

Title: _____

Medium: _____

Code: _____ Price: _____



Members' Exhibition

Title: _____

Medium: _____

Code: _____ Price: _____



Members' Exhibition

Title: _____

Medium: _____

Code: _____ Price: _____



Members' Exhibition

Title: _____

Medium: _____

Code: _____ Price: _____

PRESIDENT'S REPORT *Alison James*

Hello members,

Wow!!! What a year we have had so far!! It doesn't feel like there's been a moment to spare with all the activity we've had at the centre so far.

Are you entering our second Members Exhibition for the year?

Normally this exhibition is for our potters only however they've had a few of their regular and very productive people out of action so it's now a combined members exhibition. It's held at Glenbrook Theatre Hall, and if you have artwork to display and sell we'd love you to exhibit it.

There is no cost to enter this exhibition, it's part of your membership reward. The Centre will take a 20% commission on your sales.

As we are about to start term 4, I would like to give a quick housekeeping reminder for everyone to please take note of:-

If you are using the tables in the main room, please remember that they are used by multiple groups of artists using a variety of mediums. Some students need the tables to be as clean as possible for their finished pieces to remain mark free, especially those using beautiful pieces of paper. If you are using a messy medium such as glue, paint, pastels etc please clean up after yourself. This should be part of your practice as an artist, it isn't your teacher's responsibility.

We are always interested in your feedback and thoughts regarding the Centre. If there's anything you would like to see improved, or something you think we should have on-site we'd welcome your input.

Happy creating everyone, start working on those Christmas gifts if you're making any, just 11 weeks to go and counting.... yikes!!

Your president

Alison James

ART DIRECTOR'S REPORT *Ingrid Russell*

Term 3 ended with another successful Art Prize event. The Centre once again looked fabulous and was well attended on Opening Night. Thank you to all who participated.

Term 4 starts October 16 with another full timetable. Enrolments are already underway. We have an extra mosaics class on Wednesday afternoon.

Hare St Gallery

Our 4th quarter for the year has started. We welcome Zorana McDavitt and her beautiful charcoal drawings to the gallery. Sales continue a steady trickle. The Council ranger has stopped us from putting the sandwich board on the corner of the highway which may have had an effect on the number of visitors. The Art Prize weekend had a better number of visitors that flowed on from the exhibition.

POTTERY FACILITATOR'S REPORT *Bronwyn Campbell*

I would like to welcome our brand new Tuesday night drop-in and pot facilitator Janet Langfield. She has kindly stepped in to take over to relieve me from being at The Centre four nights in a row. Janet is very experienced and will be wonderful and in the position. For those who have only just joined the potters we now have three drop-in and pot slots:

Monday night 6:30 -9 Bronwyn Campbell BMCAC Facilitator
contact through facebook bmcacmondaynightpotters or ring 0411041054

Tuesday night 6:30 – 9:00 Janet Lanfield
contact through facebook bmcactuesdaynightpotters

Saturday morning 9:00am – 12:00 Michael Dausmann
contact through facebook bmcacsaturdaypotters

These sessions are not classes but for potters with some experience. We have a limit of 7 per session. If you are new, you must contact the facilitator before attending. Potters can attend more than one session but must check attendance availability through the Facebook pages listed. The charge is \$5:00 per session.

As you would have seen in September Creations we have purchased 2 new Shimpo wheels and two stools at a cost of \$3,809.60. As previously stated, the advantage of the Shimpo is that it can be converted to a left hand drive at the flick of a switch. One left handed potter has already tried it out and was thrilled. She said it made things so much easier. I have also purchased a batmate for members to use when they forget their own. It makes attaching bats to the wheel head very simple and quick. Batemates are kept in water. Look for it in a labelled water filled jar on the white shelves. If you use it, rinse it out and replace with fresh water in the jar.

By the time you read this the potters will, hopefully, have already held their long promised Raku Day on Sunday 8th October. The fire brigade was informed and we were given the seal of approval as long as we kept our eye on the weather app. Fingers crossed we will have some great photos to show you in the December Creations. I do apologise for not reminding everyone in the September Creations, however, instructions were given in the August Newsletter. We have all been so incredibly busy and it snuck up on me a bit.

The teachers and facilitators are in the process of cleaning out the shelves and discarding unclaimed pieces in the pottery room. We cannot afford to keep unclaimed pieces on the shelves for any length of time. We simply do not have the space. After a couple of terms of gathering dust don't be surprised or complain if you see one of your pieces in a beautiful creative totem that Alison has begun filling the garden with.

Please read carefully the instructions about our newly named BLUE MOUNTAINS MEMBERS' XMAS EXHIBITION in the following pages. Every member is welcome to enter pieces at no cost, however, as Alison said we do take 20% on sold pieces.

I look forward to the potters contacting me about table space ASAP. If you wish you can just put in one or two pieces. As long as I know, I can plan where everything will go.

Congratulations to our BMCAC Printmaking Group members Janet Saunders who won 3rd Prize and Katrina Jago who won the Emerging Artist Award in the Blue Mountains Print Prize 2023 . Katrina was awarded an exhibition in January 2024 at Gallery One88 by Nationwide Curating. We also congratulate Dawn Mills for her recent Highly Commended Award in the 2023 BMCAC Annual Art Prize. It was the first time for the printmakers to enter. It's great to see that BMCAC supports and nurtures emerging artists with a lot of peer-to-peer learning from more experienced printmakers, all sharing and supporting each other on their learning journey in printmaking.

Dawn also shared her wonderful experience with the group about her waterless lithography masterclass which she attended in Florence, Italy with the Printmaking Sisters from Australia. Her group exhibition will be on from 6 to 23 October at the Printmaking Sisters Gallery in Robertson, NSW . It's a town worth visiting with artist galleries and studios to visit <https://www.annieday.com.au/exhibitions-1>

Jeannie McInnes , one of our champion and inspiring printmakers will be exhibiting her body of new prints that she printed at BMCAC Print Studio in her group show at Braemar House in November 2023.

For any interested people who would like to join our Exploring Printmaking Course our new Term 4, 8 week course is commencing on Monday 16 October from 9.30pm to 12.30pm. To register: www.bmcac.org.au

You can follow the BMCAC Blue Mountains Printmakers Ink group on Facebook.

Great work by our painting groups in both Term 2 and 3! Many of the students hadn't painted before and found their passion and talent emerging which surprised them all! If you are interested to join whether you are a beginner or an experienced painter there is always much to learn and the opportunity to develop your technique, learn new ways of applying paint and to have fun learning about composition and colour. Term 4 classes commence on Thursday 19 October for a 6 week program from 6pm-9pm . To register www.bmcac.org.au



BMCAC Term 3 Acrylic Painting



Jeannie McInnes making Cyanotypes

Generally the plants and grass are doing well with regular maintenance and some watering but leaf drop continues to be a problem.

Glenbrook Native Nursery have kindly donated more plants, and these have been planted near the top footpath leading to the main building. GNN Committee have offered a \$100 donation of plants per year and I have spent \$70 to date, so more to come. Thank you to GNN for this wonderful ongoing donation. Success so far suggests natives as the best option. The site dries out quickly with the driest and most exposed garden being along Moore Street. The latest donation was spent on Lomandras, Westringia and Philotheca.

Importantly, I have left a sprinkler in the Gallery Yurt so if anyone on duty can help by watering the grass and garden it would be appreciated. There are also two additional sprinklers in the storeroom (on the shelf near the storeroom door) and I have combined two of the hoses to make a longer hose which is hanging outside the storeroom. The longer hose now reaches from the side of the Pottery Yurt to the front of the main building which saves time and energy when watering.

Grants: nothing to report.

WORKSHOP COORDINATOR'S REPORT

Alison reports that we have had a number of successful workshops including painting, cards and Andrea's women's gatherings. The teachers are able to fill these groups themselves without advertising. One very successful workshop was run by Zorana Mc Davit that involved drawing a live black cockatoo. This might be a good one to look out for.

OTHER REPORTS & BUSINESS

Building Co-ordinator's Report:

Jeannie and David are working on fixing and then painting the eaves of the yurts. They would welcome any help on Fridays.

Librarian's Report:

Bronwyn has culled some pottery books and offered them to the potters. The ones not taken will be placed in the main room for sale. The newly donated pottery books were put on the library shelves.

Thank you to Alison who stepped in to act as the Publicity Officer and designed our flier for the upcoming Members Christmas Exhibition. She has posted it on all the usual websites.

We would like to give a big thank you to the Emu Plains Picture Framing Warehouse for increasing their sponsorship from \$50 to \$100 for this year's Art Prize.

Poetry Corner

Pascale Petit

Diego on My Mind

*Today I chose the ceremonial huipil
with a lace cobweb framing my face.*

*I have made a fine bed for you
with the white frills of my Tehuana headdress.*

*And on the counterpane of my brow
just where the pillows would rest
I have painted your portrait.*

*All day you keep me company
as I work each gauze bud
into a stiff flower.*

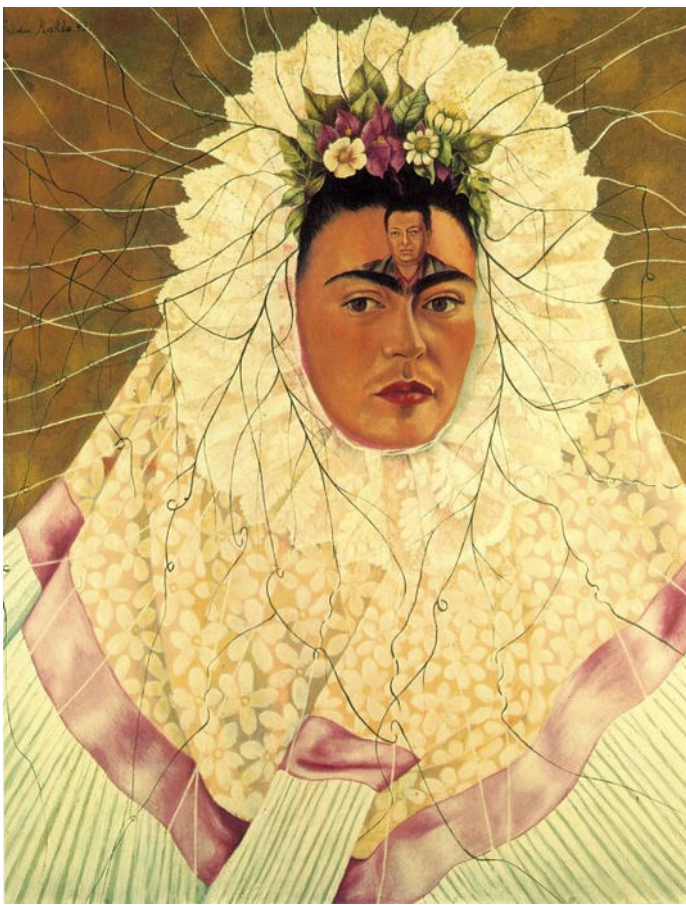
*You whisper encouragements from the mirror,
nestling deeper into my forehead.*

*But remember, when you take
María Félix
Paulette Goddard
or my sister*

*to your dirty yellow hotel room,
they lie on my eyes.*

*My nose smells them.
My mouth stays closed. Every love-cry*

*is a silk tendril
quivering in my silent house.*



Frida Kahlo, *Self-Portrait as a Tehuana*, 1943,
Oil on masonite

WHAT'S ON ?

Workshops, Galleries, Exhibitions, Prize Entries, Coming Events

BLUE MOUNTAINS CULTURAL CENTRE

30 Parke Street, Katoomba 2780

Gallery and Shop: Monday – Friday 10am – 5pm, Saturday + Sunday – 10am – 4pm

[sensorial - Blue Mountains Cultural Centre](#)

until 12 Nov

[Karlina Mitchell: a place with no other - Blue Mountains Cultural Centre](#)

14 October – 3 December

BRAEMER HOUSE & GALLERY

104 Macquarie Road, Springwood 2777

Opening Hours

Thursday – Sunday | 10am – 4pm

Susan Ruming | *Humble Mementos*
until 22 October,

Coleen English-Thomas | *This is where I've been*
until 22 October,

PENRITH REGIONAL GALLERY

86 River Road, Emu Plains

The Gallery is open daily from 10am – 3.45pm

[Penrith Regional Gallery - home of the Lewers Bequest.](#)

[Halinka Orszulok: The Great Divide - Penrith Regional Gallery](#)

[Parlour Parlëur - Penrith Regional Gallery](#)

[From the Collection: Jana Hawkins-Andersen and Paris Taia - Penrith Regional Gallery](#)

[Show me the way: Feras Shaheen - Penrith Regional Gallery](#)

All until 10 December

THE SYDNEY TEAPOT SHOW 2023



Mary-Lou Pittard



Timm O'Regan



Nicci Parry-Jones



Gerry Wedd



Marina Pribaz



Helen Shin

Part of Sydney Craft Week run by Australian Design Centre
Opening 6 - 8pm Friday 6 October by Glenn Barkley
 Artist, Writer, Curator and Gardener based in Sydney and Berry
 Exhibition continues to Sunday 5 November

Gallery Lowe & Lee | 49 - 51 King Street, Newtown 2042 | At Sydney Uni end of King Street
 T: 02 9550 4433 | E: info@gallerylnl.com | www.kerrielowe.com | Insta: @kerrielowegallery
 Open 7 days during the show: Mon - Sat 10am - 5.30pm | Sun 12 midday - 4pm



Amanda Harrison



Kara Pryor



Stephen Baxter



Fleur Schell



Stephen Baxter



Nicci Parry-Jones



Dawn Oakford



Angie Russi

SABBIA GALLERY

www.sabbiagallery.com

609 Elizabeth Street

Redfern, Sydney, NSW, 2016, AUSTRALIA

+61 2 9361 6448 gal-

ery@sabbiagallery.com

Tues-Fri 11am to 6pm, Sat 11am to 4pm

NGANAMPA TJUKURPA NGANAMPA ARA : OUR STORY OUR WAY

A major exhibition celebrating twenty wonderful years of Pukatja ceramics at Ernabella in the APY Lands

4 - 28 October 2023

Alison Milyika Carroll
Elizabeth Dunn
Rupert Jack
Lynette Lewis
Melissa Lewis
Janice Stanley
Renita Stanley
Tjunkaya Tapaya OAM
Anne Nginyangka Thompson
Carlene Thompson
Derek Jungarrayi Thompson
Marissa Angapiya Thompson
Tjimpuna Williams



MARIAN SHAPIRO

A Stitch In Time

26 October to 19 November 2023

Thursday – Sunday 10am-4pm (closed Mon to Wed)

Braemar Gallery and the artist
warmly invite you to the launch

Saturday 28 October, 2-4pm

COVID-19 restrictions may apply



Keep Me Warm 2023, marble, venetian glass, cord, knitting needles, 43 x 29 x 5 cm



Braemar Gallery, 104 Macquarie Road, Springwood
Thursday - Sunday 10am-4pm email: braemargallery@gmail.com

BMCAC member and former mosaic teacher at the Centre **Marian Shapiro** is exhibiting at the Braemar gallery, Springwood in October.

Her exhibition *A Stitch in Time*, is a response to the COVID-19 pandemic and the advent of lockdowns and isolation, both externally and internally imposed, which saw the resurgence of domestic skills such as bread-making, knitting, crochet etc, giving those who had the means and time a combination of something to do, an outlet for creative endeavour and an antidote to the boredom and frustration at being confined to home.

Marian says "There were suddenly unexpected large tranches of domestic time, and some of us needed to turn non-productive time into an opportunity for creativity. *A Stitch in Time* represents our everyday experience over the past few years.

In Australia, mosaic is currently predominantly practised by women and hovers on the cusp of art and craft. Craft techniques and the realm of domesticity are often seen as a female domain. Using the medium of mosaic, itself a medium oscillating between art and craft, this exhibition reclaims domestic activities, specifically knitting and embroidery. It explores the tension between the familiar and the strange by rendering ordinary, common objects in unfamiliar materials, enabling a different view of the everyday. Hard, unyielding, permanent materials such as marble and glass give the illusion of something soft, flowing and impermanent. This series began by looking back at 2020 and the activities many of us took up in lockdown. Ironically, it was the second lockdown in 2021 which enabled me to develop and continue this body of work into the present. "

Marian will be at the gallery on the following dates

Saturday 28 October 10 - 4 pm

Saturday 4 November 1- 4 pm

Sunday 5 November 10 - 1 pm

Sunday 12 November 1 - 4 pm

Re-Emergence

Group Exhibition

**GALLERY
NWC**
NATIONWIDECURATING.COM



62 Atchison Street, St Leonards
Thurs-Fri 11am-4pm | Sat-Sun 12-4pm



Exhibition: 12-22 October 2023 | Celebration: Saturday 14 October 2023 5-7pm

Oliver Fontany | Arunan Dharmalingam | Bonnie Exley | Lynda Strong | Lucy Scales

Re-emergence celebrates the resilience and camaraderie of 5 artists throughout a time that has been unpredictable and challenging.

All artists exhibiting in this show identify as living with a disability. Over the past few years, each artist has had to adapt to new studio spaces and environments, new facilitators and ways of skill-sharing. They have also had global, community based and workplace changes on a daily basis resulting in new new ways of creating and living.

Re-emergence aims to display the strength, talent and immense adaptability of these artists, and their want to support each other to succeed in their artistic goals—In a world that so often does not afford them the time, funding and opportunity that it does many others.

***"Please join us for some drinks and nibbles, Saturday 14 October.
We look forward to seeing you at Gallery NWC!"***

Gallery NWC Open: Thursdays-Fridays 11am - 4pm + Weekends 12pm - 4pm

Katherine Kennedy

Free workshop with Creative Plus Business, presented by Monica Davidson

Title: **Creatives' Guide to Marketing**

Description: Marketing is one of the most despised and least understood aspects of running a creative business and being an arts entrepreneur. We're outlining the seven steps to get you started creating your marketing plan.

Date: Thursday 30 November

Time: 5.30-7.30pm, Doors will open at 5:00 and close at 8:00pm, so that you can eat, and meet fellow creatives. A light dinner provided.

Location: Borland Lounge, Joan Sutherland Performing Arts Centre, 597 High Street, Penrith

Registration <https://bit.ly/3NTilqU>