



**BLUE MOUNTAINS CREATIVE ARTS CENTRE NEWSLETTER    November 2023**

WEBSITE: [www.bmcac.org.au](http://www.bmcac.org.au)      FACEBOOK: [bmcac](#) & [bmcacsaturdaypotters](#)  
INSTAGRAM [lifedrawing\\_glenbrook](#)

## Ceramics from the BMCAC Members Exhibition



Pot by Linda Kemp



Mask by Marianne Pollpeter



Trinket box by Bronwyn Campbell



Vase by Kathleen Zanardo

Our 'Hare Street' Centre is located on the traditional homeland of the Dharug and Gundungurra people. We recognize and pay respect to the traditional custodians of country past, present and emerging.

## CONTENTS

- 3 President's Report,  
Art Director's Report
- 4 Pottery Facilitator's Report
- 5 A Christmas Project for the Potters
- 6 Printmaking News,  
Other Reports & Business
- 7 Exhibits from the BMCAC Members  
Exhibition
- 8 Poetry Corner
- 9-13 What's On



### CALENDAR OF BMCAC EVENTS

DATE	EVENT
------	-------

Mon. 16 Oct. - 8 Dec.	TERM 4
Sun. 19 November,	Chalk Painting
Sat. 2 December,	Womens' Group
Thu. 7 Dec., 7.30pm	Committee Meeting
Sun. 10 December,	Card making
Sat. 16 December,	Bird Drawing

## EDITOR'S NOTE

Congratulations to several BMCAC members whose work is being shown in galleries. Especially printmakers have excelled: Jeannie McInnes has an exhibition at Braemer House in Springwood (see p. 9) and Cheryle Yin Lo is showing at Lane Cove Gallery with the Sydney Printmakers (see p. 13).

Also, our life drawing facilitator Katrina Bodey was selected amongst 1600 applicants to participate in the National Emerging Art prize 2023 with her ceramic piece 'Dissolution', on show at the Michael Reid Art Bar in Pyrmont until 13 November (p. 11).

Recent mosaics by BMCAC member Marian Shapiro will still be on show at Braemer House until 19 November (p 10)..

So, much excellent art can be seen in galleries near and far. Summaries appear in our 'What's On' section (pages 9-13).

And then, there are the 'big' ones at Art Gallery of NSW: Kandinsky is on show now and Louise Bourgeois opens on 25 November.

Enjoy your art and, please send me contributions for 'Creations'!

[rudich7@dodo.com](mailto:rudich7@dodo.com)

Rudi Christen

Creations' Editor

**Get in touch with us ! We'd like to hear from you.**

Alison JAMES	President & Workshop Coordinator	0416 957 688	<a href="mailto:arty_ali@hotmail.com.au">arty_ali@hotmail.com.au</a>
Ingrid RUSSELL	Vice President & Arts Director	0423 124 473	<a href="mailto:bmcac.mail@gmail.com">bmcac.mail@gmail.com</a>
Bronwyn CAMPBELL	Secretary & Pottery Facilitator	0411 041 054	<a href="mailto:a.b.campbell@optusnet.com.au">a.b.campbell@optusnet.com.au</a>

## PRESIDENT'S REPORT *Alison James*

Hello members,

Our final members exhibition for the year was quite successful, there were good sales to many of the exhibiting members which is always rewarding. It was lovely to see a number of newer members exhibiting their work and rostering on for sales duties.

Thank you to everyone who helped with the set up and pack down of the exhibition. Next year we would greatly appreciate having an extra pair of hands to help David set up the signage for the event along the Highway. This is a very important part of the weekend and it's not easy for one person to complete by themselves.

We now have Air Conditioners in all workspaces at the Centre as the last two have now been installed in our Jade and Yellow yurts. This will make the spaces much more user friendly over the summer months.

Hope you are all enjoying your creative time at the Centre.

Your president  
Alison James

## ART DIRECTOR'S REPORT *Ingrid Russell*

Term Four is in full swing. We have a fairly full timetable. There has been a huge increase in interest for Printmaking and the class is quite full. The three kids Pottery classes are full and producing some exceptional work. The adult Pottery classes also have good numbers. The Thursday classes are having fun with coloured clay. We have three Mosaics classes proving to be very popular. Pen and Wash is full and producing excellent work. The only kids Art class running this term is the Friday mixed bag. The Acrylic painting and Oil painting classes are just holding on to minimum numbers. Thanks to Katrina Jago and helpers for recovering the tables with fresh plastic. The room looks so much better with white tables. Let's all try to keep it that way by cleaning up after ourselves.

### **Hare St Gallery**

We now have an air conditioner in the gallery, ( also in the Jade Yurt), which will make our days there much more comfortable. Sales will hopefully pick up as we approach Xmas and people are looking for special presents. Put us on your shopping destinations list, we are open weekends right up till Xmas Eve.

All the potters seemed to be very happy with the sales at our recent Members' Exhibition. It was great that we had 3 new pottery exhibitors and of course the wood turners who brought in a new clientele. I would like to thank all those that helped with setting up and cleaning up afterwards. It made the day that much easier. Especially, thank you David Attwood who takes everything we need over to the hall and puts up all our signs, which is a pretty thankless task. It would be really good if we could find a volunteer to help David put up the signs. We miss out on sales if we don't have enough signs in strategic positions.

**Next year's Exhibition will be on the 26<sup>th</sup> and the 27<sup>th</sup> of October.** We did discuss a November date, thinking one closer the Christmas might be the way to go but there were none available. Our regular date of the third weekend in October was also not available due to the Glenbrook Players booking many Saturdays in a row.

Monday night drop-in-attendances have been pretty steady with a couple of spaces but Tuesday night has had low attendances. We discussed combining again but Janet has kindly agreed to continue for the remainder of the year. We will reconsider in 2024.

**CHRISTMAS BREAK: Drop in groups will finish on the following dates.**

**Saturday Pottery Drop-in 18<sup>th</sup> November**

**Monday Pottery Drop-in 20<sup>th</sup> November.**

**Tuesday Pottery Drop-in 21<sup>st</sup> November.**

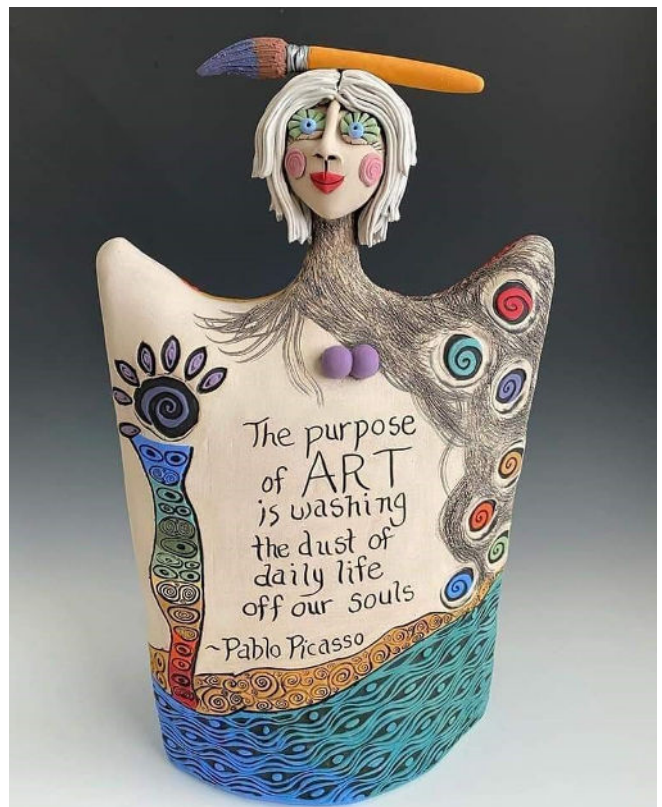
**All Drop-in groups will resume the week beginning the 5<sup>th</sup> February.**

Pottery members will be able to access the pottery room over the holiday period but you will need to discuss this with your facilitator. Make sure you pay the required \$5 for each 3hr visit. Write your name and date in the casual attendance book and place your money in the purple money box.

**Kiln shelves:** The kiln shelves have been coded to make packing less time consuming. Please read the explanation of codes that has been attached to the window shelf. Please make sure when you unpack that the shelves are put in the correct location.

Early next year we will have a working bee to clean, grind and put new shelf wash on all our shelves. Our shelves are very expensive (\$100 +) to replace and they need tender loving care. We could also make some new setters for general use on that day - raku clay will be provided for this task.

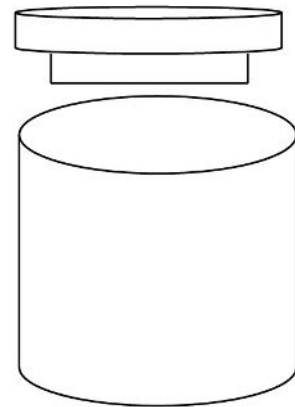
This will be my last report for the year. I do hope you have a wonderful break and enjoy your time with those most precious to you. Stay safe and well.



## A CHRISTMAS PROJECT FOR THE POTTERS

The Monday/Tuesday potters have been discussing saggar firings, so I thought we would have a go. There are a few ways to do a saggar firing. The following is a method I have experience with so for our first effort we will try the following:

1) Make a robust terracotta or raku cylinder 18cm in diameter x 25cm tall. Make a flat lid with an internal flange. These will need to be bisqued. By using this size we can fit two per shelf in Mother Bear and stack them on top of each other. You might like to make larger ones in the future.



2) Make a small pot or animal that will fit inside no larger than 12cm in diameter and no taller than 18cm tall.

3) Beginning at the leather hard stage, burnish your pot so the outside is very shiny and smooth. You can use a flat stone, your finger inside a plastic bag or the back of a spoon. Keep rubbing the entire surface until the clay is too dry to continue. (It will begin to leave a scratch.) You should end up with a very smooth shiny surface.

4) On the day of packing, we will fill approx. 1/3 to 1/2 of your cylinder with sawdust, bury the bottom of your pot in the sawdust, sprinkle oxides like stannous chloride and ferrous oxide on top of sawdust (we will supply sawdust and oxides on the day of packing), add any combustible material you choose to bring like: seaweed (collect some while on holiday, the flat brown one is good), orange/lemon/banana peel, hair, feathers.

5) Place your lid on and seal with just wet clay, if needed.

6) Firing will be to 900°. Like raku these decorative pots are porous and not food safe.

We will choose a date for firing in Term One. Check out the internet for ideas.

Happy creating, Bronwyn

- Print Studio is functioning well.
- Printmaking class on Monday morning is going well with an increasing number of students this term with new and returning students. Painting class on Thursday night is going well and even after two weeks into the course has produced outstanding work.
- The level of the quality of the work by returning students is outstanding with Katrina Jago and Jeannie McInnes leading the way and pushing the boundaries of monoprinting and solar plate etching and both preparing for exhibitions. Congratulations to Jeannie in her upcoming exhibition at Braemar Gallery in November as she has set high standards and produced a beautiful body of work. Congratulations to Dawn Mills, from our BMCAC who has just been selected for the Blue Mountains Cultural Centre's Portrait exhibition for 2024.
- Thank you to Ingrid Russell for donating the book press as part of the evolving establishment of the print studio. Thank you to Jeannie in also updating new glass for the bench in the print room and to Katrina, Gus and Rudi and the team who helped to put new plastic on the art tables.

If you are interested in following what's happening at BMCAC in printmaking join Facebook Blue Mountains Printmaking Ink. It's great we have had a number of new people interested in printmaking and wanting to join our network.

## OTHER REPORTS & BUSINESS

### **Correspondence:**

Notification was received, both by letter and by email, stating our Charity report was due. Our report is usually completed after the AGM in February.

### **Workshop Co-ordinator's Report:**

- 19<sup>th</sup> November, Chalk Painting
- 2<sup>nd</sup> December, Womens' Group
- 10<sup>th</sup> December, Card making
- 16<sup>th</sup> December, Bird Drawing

### **Building Co-ordinator's Report:**

David has been securing the eaves to be ready for painting.

### **General Business:**

In order to cut down on the time of our meetings, Jeannie moved that "*committee members email their reports to all committee members before the meetings so they can be read before the meeting, areas not to be included in Creations to be highlighted in red. Each committee member can then prepare points for discussion for the meeting.*" Seconded by Alison, passed unanimously.

## More Exhibits from the BMCAC Members Exhibition



Pots by Marianne Pollpeter



Linda Kemp's figurines and pots



Bronwyn Campbell's pots & teapot

## Poetry Corner

### *Panic at John Baldessari's Kiss*

Elena Karina Byrne

*The aftermath always happening like an airplane falling, or a man midair falling from a horse, and an arrow, a gun, many guns pointing away, at us, our all bull's-eye-on-the-mark. This is what he sees when he sees. Maybe Wrong or not, the appropriation, the film clip, chase, pressed lips over lips, photo moment on the minute-drawn breath in, the over, the under, bodies in black and white cut to pose, the way a kiss can pose, dispose of everything around it for another, dispose of thinking. It's like waving good-bye. Mouth to mouth seeing as saying. Inside. Resuscitation back to the brain saying yes as the mouth makes an O. Circles for the digital age, colored dots for faces already made for erasing. Hurry, come, he, 6'7", sees fifteen minutes from the Mexican border, cremates his old paintings up close. But the ashes were kept in a book urn, not so afloat in the ocean with my parents, Above, On, and Under (with Mermaid) to kiss and kiss, riot in the dark depth of it. The collision, the kiss, the capture, once in the for-all-we-know of haunting who comes first. Kiss into kiss and so into kiss. All laws of gravity leave us. Gender begins in violence and space. Space begins in gender and violence as all laws of gravity leave us. So, kiss, kiss, kiss!*



John Baldessari, Kiss/Panic, 1984



# WHAT'S ON ?

Workshops, Galleries, Exhibitions, Prize Entries, Coming Events

## BRAEMER HOUSE & GALLERY

104 Macquarie Road, Springwood 2777

### Opening Hours

Thursday – Sunday | 10am – 4pm

### THE LENS LADIES

*Experimental Photography:  
Painting and the Light Spaces In Between*

23 November to 17 December 2023

Thursday – Sunday 10am-4pm (closed Mon to Wed)

Braemar Gallery and the artists warmly invite you to the launch to be opened by Len Metcalf

**Saturday 25 November, 2-4pm**



JEANNIE MCINNES-GREEN Pathway 2023. Monoprint 30 x 42 cm



Braemar Gallery, 104 Macquarie Road, Springwood  
Thursday - Sunday 10am-4pm email: braemargallery@gmail.com



JEANNIE MCINNES *Liquidambar* 2023.  
Digital print. 30 x 42 cm



ROBYN COOK *My Garden #2* 2023.  
Digital double exposure print, flowers. 46.5 x 46.5cm



JUDY THISTLETON MARTIN *Protea One* 2023.  
Cyanotype, emulsion, bubbles, protea. 61 x 74 cm

# MARIAN SHAPIRO

## *A Stitch In Time*

26 October to 19 November 2023

Thursday – Sunday 10am-4pm (closed Mon to Wed)

Braemar Gallery and the artist  
warmly invite you to the launch

**Saturday 28 October, 2-4pm**

*COVID-19 restrictions may apply*



Braemar Gallery, 104 Macquarie Road, Springwood  
Thursday - Sunday 10am-4pm email: braemargallery@gmail.com

Keep Me Warm 2023, marble, venetian glass, cord, knitting needles, 43 x 29 x 5 cm

BMCAC member and former mosaic teacher at the Centre **Marian Shapiro** is exhibiting at the Braemar gallery, Springwood in October.

Her exhibition *A Stitch in Time*, is a response to the COVID-19 pandemic and the advent of lockdowns and isolation, both externally and internally imposed, which saw the resurgence of domestic skills such as bread-making, knitting, crochet etc, giving those who had the means and time a combination of something to do, an outlet for creative endeavour and an antidote to the boredom and frustration at being confined to home.

Marian says "There were suddenly unexpected large tranches of domestic time, and some of us needed to turn non-productive time into an opportunity for creativity. *A Stitch in Time* represents our everyday experience over the past few years.

In Australia, mosaic is currently predominantly practised by women and hovers on the cusp of art and craft. Craft techniques and the realm of domesticity are often seen as a female domain. Using the medium of mosaic, itself a medium oscillating between art and craft, this exhibition reclaims domestic activities, specifically knitting and embroidery. It explores the tension between the familiar and the strange by rendering ordinary, common objects in unfamiliar materials, enabling a different view of the everyday. Hard, unyielding, permanent materials such as marble and glass give the illusion of something soft, flowing and impermanent. This series began by looking back at 2020 and the activities many of us took up in lockdown. Ironically, it was the second lockdown in 2021 which enabled me to develop and continue this body of work into the present. "

*Marian will be at the gallery on the following dates*

*Saturday 28 October 10 - 4 pm*

*Saturday 4 November 1- 4 pm*

*Sunday 5 November 10 - 1 pm*

*Sunday 12 November 1 - 4 pm*



## KATRINA BODEY

**DISSOLUTION, 2023**

PAPER CLAY AND RAKU T CLAY

H: 36.5 cm

Michael Reid Art Bar

4 Jones Bay Road, Pyrmont

*until 13<sup>th</sup> November 2023*

**Opening Hours**

Tuesday – Saturday, 10am – 4pm

To be exhibited later in Brisbane

## FROM THE EARTH

**RECENT WORKS BY HELEN SWORDS AND LIZ MAYBERRY**

**PRESENTED BY ROSBY WINES & GALLERY**

*A potter and a basket weaver walk into a café....*

And so 'From the earth' is conceived over a coffee. Discussing their work, the two Central West artists, Helen Swords and Liz Mayberry both realised their works are informed by and shaped from their love of the land – as farmers, gardeners and artists. They decided to join their creative forces to see how clay and fibres could play together to convey that passion.



**OPENING NIGHT EVENT:**

6:00pm - 8:00pm, Friday, November 17th (everyone's welcome)

Rosby Wines Cellar Door & Gallery, Mudgee

RSVP: [kay@rosby.com.au](mailto:kay@rosby.com.au)

# Curating Matters #45

JOHN RICE - SOLO EXHIBITION

JULIE SIMMONS - SOLO EXHIBITION

**GALLERY NWC - 62 ATCHISON STREET, ST LEONARDS, NSW AUSTRALIA**

## John Rice

A collection of artworks in oils capturing the light and colours of the Australian landscape by Australian artist John Rice—Fellow of the Royal Art Society of NSW. [Online Gallery](#)

## Julie Simmons

An exhibition of transparent watercolours painted en plein air or from studies developed into larger works in the studio by Australian artist Julie Simmons—Fellow of the Royal Art Society of NSW. [Online Gallery](#)

Gallery NWC Open: Thursdays-Fridays 11am - 4pm + Weekends 12pm - 4pm



*"Burraborang" by John Rice*



*"Bushland Shadows" by Julie Simmons*

## Free workshop with Creative Plus Business, presented by Monica Davidson

Title: [Creatives' Guide to Marketing](#)

**Description:** Marketing is one of the most despised and least understood aspects of running a creative business and being an arts entrepreneur. We're outlining the seven steps to get you started creating your marketing plan.

**Date:** Thursday 30 November

**Time:** 5.30-7.30pm, Doors will open at 5:00 and close at 8:00pm, so that you can eat, and meet fellow creatives. A light dinner provided.

**Location:** Borland Lounge, Joan Sutherland Performing Arts Centre, 597 High Street, Penrith

Registration <https://bit.ly/3NTilqU>

# SYDNEY PRINTMAKERS 2023

8 November - 2 December

Opening Night: Wednesday 15 November 6pm - 8pm.

Group exhibition by nationally and internationally acclaimed members of the Sydney Printmakers' collective.

Sydney Printmakers explore all traditional and contemporary forms of printmaking and have built up a reputation for excellence in the field. The collective aims to develop a dialogue between their practices and the wider audience by promoting the diversity of printmaking as a versatile, adaptive and engaging medium.

Front: Jacqui Driver, 'Caught in the Story II', Lithography. Image courtesy of the artist.  
Back Anna Russell, Exposure, 2020, relief, stencils, and Solaris 2020, relief, stencils. Image courtesy of the artist



Gallery Lane Cove + Creative Studios  
Upper level, 164 Longueville Road, Lane  
Cove NSW 2066  
p. 02 9428 4898

Open Tuesday - Friday 10:00am - 4:30pm & Saturday  
10:00am - 2:30pm



Scan to learn more

## BLUE MOUNTAINS CULTURAL CENTRE

30 Parke Street, Katoomba 2780

Gallery and Shop: Monday – Friday 10am – 5pm, Saturday + Sunday – 10am – 4pm

[sensorial - Blue Mountains Cultural Centre](#)

until 12 Nov

[Karlina Mitchell: a place with no other - Blue Mountains Cultural Centre](#)

Until 3 December

## PENRITH REGIONAL GALLERY

86 River Road, Emu Plains

The Gallery is open daily from 10am – 3.45pm

[Halinka Orszulok: The Great Divide - Penrith Regional Gallery](#)

[Parlour Parlëur - Penrith Regional Gallery](#)

[From the Collection: Jana Hawkins-Andersen and Paris Taia - Penrith Regional Gallery](#)

[Show me the way: Feras Shaheen - Penrith Regional Gallery](#)

All until 10 December