



BLUE MOUNTAINS CREATIVE ARTS CENTRE NEWSLETTER August 2024

WEBSITE: www.bmcac.org.au

FACEBOOK: [bmcac](#), [bmcacsaturdaypotters](#) &
[Blue Mountains Printmaking Ink](#)

INSTAGRAM: [lifedrawing_glenbrook](#)



Watercolour Teacher Gus Carrozza amongst the winter flowers at our Centre.

Our 'Hare Street' Centre is located on the traditional homeland of the Dharug and Gundungurra people. We recognize and pay respect to the traditional custodians of country past, present and emerging.

CONTENTS

- 3&4 Pottery Facilitator's Report
- 5 Penrith Show Information
- 6 Other Reports & Business
- 7 Poetry Corner
- 8&9 Empty Bowls
- 10... What's On?

BMCAC EVENT SCHEDULE

DATE	EVENT
Thu. 5 Sept. 7.30pm	Committee meeting
TERM 3	Mon. 29 July - 20 Sept.
Sat. 5 Oct. & 6 Oct.	BMCAC Art Prize
Fri. 25 Oct. - 27 Oct.	BMCAC Members exhibition
	Blue Mountains Print Prize in 2025

EDITOR'S NOTE

Term 3 has started. We wish our Life Drawing facilitator Rick Hawkins a speedy recovery from a health scare.

In this issue Bronwyn provides detailed instructions for the potters on firing and glazing their pots as well as on good management practice of the premises.

I hope you enjoy 'The Disquieting Muses' hiding in the Poetry Corner.

And, Please consider entering a bowl for the Empty Bowls project.

Finally, What's On delivers many exciting art offerings.

Let me know if you have news about art projects and get in touch:

rudich7@dodo.com

Rudi Christen
Creations' Editor



"We always give him the ham to carve. He's such an artist."

Get in touch with us !

Alison JAMES	President & Workshop Coordinator	0416 957 688	arty_ali@hotmail.com.au
Ingrid RUSSELL	Vice President & Arts Director	0423 124 473	bmcac.mail@gmail.com
Bronwyn CAMPBELL	Pottery Facilitator	0411 041 054	a.b.campbell@optusnet.com.au
Janet LANGFIELD	Secretary	0408 228 059	janetxlangfield@gmail.com

Despite the cold weather the drop in groups are going along swimmingly. We had nine members on a Monday night recently. Janet reports Tuesday night has also had good numbers, as has Saturday mornings.

Over the last couple of weeks we have had a 1080 firing, a mid fire and a stoneware firing, so we need everyone to please come and pick up their glazed pots. The congestion of finished pots in the kiln room makes it very hard for new pots to be unpacked from boxes and sorted for packing.

The very heavy shelves for Father Bear are remaining problematic for some of us. I'd like to thank Michael who helped both pack and unpack the 1080 firing and Will helped put the shelves in for our Monday night pack. Neither I nor Cathy could lift the top ones in. We will try once again to sell them and replace them with lighter shelves.

The drop in groups will be asked to make some new setters for the kiln room. Monday night potters have already made a start - thank you Vanessa, Kathleen, Bronwyn and Sandra for being a wonderful help.

EMPTY BOWLS CHARITY

Don't forget about donating a bowl. Ring Linda Kemp on 0430477301 if you have a bowl to donate. The event will be held on the **7th September**.

For further details please refer to pages 8 & 9.

PENRITH SHOW: 24th and 25th AUGUST

\$100 has been donated to the Penrith Show Committee as a donation to the Pottery Sections prize pool.

Drop your pots off between 9am and 1pm on Sunday 11th August. You can fill out entry forms on the day.

Sections are: Open thrown, Functional Set, Handbuilding, Sculpture, Low fire (*raku, sawdust*), Slip cast and Beginners (*has begun potting within the last 12 months*).

For further details see page 5.

NEW KILN:

We are working on a final decision of brand and size for our new kiln. Hold your breath.

Continued next page

GETTING YOUR POTS FIRED

Having just packed three kiln loads of pots a number of reoccurring issues have come up concerning work put out to be fired. Packing a kiln is very time consuming. Your facilitators take time out of their days to pack for which you are not charged. They arrive early in the morning to turn the kiln on, if it is a bisque, they return 4 hours later to put in a bung and then return again when the temp. is 600 to put the second bung in the door. This sometimes can be 10pm – 12pm at night depending when the kiln was turned on. So, when we are constantly presented with pots that have not been prepared properly it is very frustrating.

When you put your pots out to be fired, please check:

- Your pot is not more than 2cm thick in any area of the build. *If it is, there is a possibility of it exploding and throwing shards all over everyone pots.*
- The bottom of your pot is completely free of glaze. Double check as you put it on the shelf. The glaze line should be at least 1/2cm from the bottom of the pot. *Sit it on a bat, hold it up and check it is clear. The packer does not have time to wash the bottoms of your pots.*
- Your underglaze line finishes with the glaze line.
- *Your bottom should be as neat as your top. A good potter will always look at the bottom when purchasing a pot. Put your name on your pot.*
- The rim of your pot whether hand built or thrown should be neatly finished and rounded. *Hand build pieces can be gently sponged back with a just wet sponge to take the sharpness of edges. Glaze is a glass - rough or sharp edges can cut.*
- If you have chosen to glaze the bottom of your earthenware piece, that you have put it on a tripod waiting to be fired, so that the packer knows it has glaze underneath.
It is not recommended that you put SW pieces on tripods. The high temperature will warp the clay.
- You are putting your pot on the correct shelf.
 - All pots for bisque EW, Midfire and SW go on the 1080 shelves
 - EW glaze go on 1080 shelves
 - Midfire glaze go on the 1220 shelf in front of the window
 - SW glaze 1280 beside Baby Bear

Glaze choices

The regular commercial clear glazes are usually very stable so it is possible to take them a little lower on the pot if you have a particular design reason for doing so but be careful to feather it back so it is not thick towards the base.

If you are experimenting with a new glaze, always test it first on a small piece and put it on a setter to check if it is stable. Our shelves are worth \$100 each.

Remember if you put a second glaze over the top of another glaze it will make the glaze more fluid, so only put the second glaze on the top third of your pot. Some Amoco glazes can be extremely fluid, so design your application to allow for runs. A good trick is to quickly dip the bottom 1/3 of your pot in water and then glaze. This way you get a thinner application on the bottom third of your pot.

Having said all the above, we have seen some really beautiful pots come out of the kilns of late. Please take photos of your work and send them to Rudi to be included in Creations. In the hustle and bustle of a busy night we don't always have time to take photos and often don't know whose pots they are.

We want all your pots to come through the kiln as gems you can be proud of. We want the archaeologists of the future to dig your pot up and say to their colleagues "OMG! come and look at this."

Happy creating Bronwyn

PENRITH SHOW 2024, Sat. 24 & Sun. 25 August

Information for Exhibitors

Entry Fee: Painting & Drawing: \$5.00 per item, Porcelain: \$3.00 per item, Pottery: \$3.00 per item

Section Close Date: Entry Forms & Artwork can be delivered to the Show Office prior to Friday 16th August 1pm (to avoid a queue, do not wait until the last day)

Presentation of Awards Commencing: 3.00pm Sky Lounge Saturday 24th August

Collection: The Sky Lounge will be closed to the public at 4.00pm Sunday 25th August. Exhibits may be removed between the hours of 5pm and 6pm on that day. Exhibits may also be collected from the office, Monday 26th August after 10am.

Conditions of Entry:

1. Every entry submitted must be the original work of the entrant and not a copy and not previously exhibited at a Penrith Show.
2. Selected entries will be exhibited at the Penrith Show, Sky Lounge Level 2 on the dates mentioned.
3. All entries will remain the property of the entrant.
4. Entries in Section A, shall be marked clearly on back with:
 - (a) The name, address and contact number of the entrant
 - (b) The title
 - (c) The price at which the Society is authorised to sell the entry or NFS.
 - (d) The Class entered.
5. All Paintings must be suitably framed and prepared for hanging with nylon cord, D Rings or staples, no wire and not exceed 0.84 sq. m (9sq ft) Framed. Porcelain Painting as defined. (Oversized paintings will not be accepted.) Canvas / Deep sided canvas, staples in back & painted on sides, prepared for hanging with nylon cord.
6. Each Pottery item or set to be individually marked with entrant's ID (e.g., initials & no.)
Each Porcelain item should have name covered.
7. Freight, insurance, postage and any other expense in connection with or incidental to the submission and exhibition of any exhibit shall be paid by the entrant.
8. With respect to every exhibit submitted, the society in its absolute discretion reserves the right:
 - (a) To retain a commission of 20% of the painting purchased or sold while in the custody of the Society and 20% on any Pottery or Porcelain piece.
 - (b) To consider but not necessarily display any exhibit.
 - (c) To arrange prior viewings, reproduction in any newspaper or other associated media upon such terms and conditions as the Society deems fit.
9. The Society will exercise all reasonable care but will not be responsible for any damage to or loss of any entry submitted however such loss or damage may occur.
10. The Judges appointed by the Penrith District AH&I Society will be sole arbiters of the winning entry. Neither the Judges nor the Society will enter into any debate or discussion after the awards have been made.
11. We cannot guarantee to hang all paintings as space is limited. There is a limit of 5 works that may be submitted in the Adult Section and 2 entries in the Junior sections (8 & 9), but selected entries only will be hung or displayed.
12. Items made from synthetic clay will not be accepted.
13. Hand Painted Porcelain Section – All work must be painted on hard paste porcelain or bone china – no ceramic work accepted.
14. Hand Painted Porcelain Section – All work must be completed within the last 24 months; names must be covered.

Postal Address: P.O Box 7086, South Penrith NSW 2750

Show Office: Level One, 141 – 147 Station Street Penrith Showground

Email: penrithshow@clubpaceway.com

Show Office Phone number: 0247 212 375

OTHER REPORTS & BUSINESS

Art Director's Report: *Ingrid Russell*

There are 19 new members.

There are currently 7 adult classes running and 4 children's classes.

Enrolments are down this term but this is likely a seasonal change.

There will be two printmaking groups this term: Monday morning and Wednesday evening.

Gardening Report: *Liz Bryden*

A lot of gardening maintenance has been done over the past few months. Having to do less mowing in the winter months has allowed for more time to clean away leaves and trim plants, do some weeding etc so it should look great for Spring.

More regular rain has also helped, hopefully there is more to come. Generally been a good time to get on top of everything before it gets hot again.

Librarian's Report; *Gus Carrozza*

Two boxes of books were dropped off anonymously at the gallery door. Bronwyn has placed some in the library but advised that the boxes are too heavy to carry. Surplus books can be donated to Salvos/Vinnies etc. The library shelves are quite full now and there isn't space for further donations.

Building and Maintenance Report: *Jeannie McInnes*

Not much maintenance is required at the moment. The kiln room door has been repaired and a new lock and handle installed – reminder that this needs to be locked from the inside when exiting.

The roof has been repaired and cleaned and the life drawing stand has new casters. These are very reactive and possibly dangerous so could benefit from some caster cups for grip.

General Business

Bronwyn mentioned that some time ago she had painted reflective white paint on the posts at the driveway entrance, making it easier to navigate at night time. She suggested that this time around we could consider the blue or green solar lights that are available from Bunnings for around \$16.

Bronwyn will approach ArtSup to seek donations for the Art Prize. Gus is to donate \$50 for a water-colour award.

Michael now has the Square reader which is available to process pottery member payments.

Business arising from July meeting:

Amos Hampton from Summit Clean Solutions was contracted to clean the roof and gutters for \$550: Jeannie advised that this work has now been done and Amos has done a great job.

Confirmation has been received via email that the \$1,000 donation from Council was approved and is to be utilized for free weekend workshops.

Jeannie reported that the required work on the western wall of the main building is still pending. The next steps are to obtain some scaffolding, with a view to undertaking the required work ourselves.

Ingrid advised that the entries for the Art Prize are now open with a couple of submissions already received. Work is being done to update the logo and flyer with this year's details. Publicity Officer to arrange the banner.

The Disquieting Muses

By Sylvia Plath

*Mother, mother, what ill-bred aunt
Or what disfigured and unsightly
Cousin did you so unwisely keep
Unasked to my christening, that she
Sent these ladies in her stead
With heads like darning-eggs to nod
And nod and nod at foot and head
And at the left side of my crib?*

*Mother, who made to order stories
Of Mixie Blackshort the heroic bear,
Mother, whose witches always, always
Got baked into gingerbread, I wonder
Whether you saw them, whether you said
Words to rid me of those three ladies
Nodding by night around my bed,
Mouthless, eyeless, with stitched bald head.*

*In the hurricane, when father's twelve
Study windows bellied in
Like bubbles about to break, you fed
My brother and me cookies and Ovaltine
And helped the two of us to choir:
'Thor is angry; boom boom boom!
Thor is angry: we don't care!
But those ladies broke the panes.
When on tiptoe the schoolgirls danced,
Blinking flashlights like fireflies
And singing the glowworm song, I could
Not lift a foot in the twinkle-dress
But, heavy-footed, stood aside
In the shadow cast by my dismal-headed
Godmothers, and you cried and cried:
And the shadow stretched, the lights went out.*

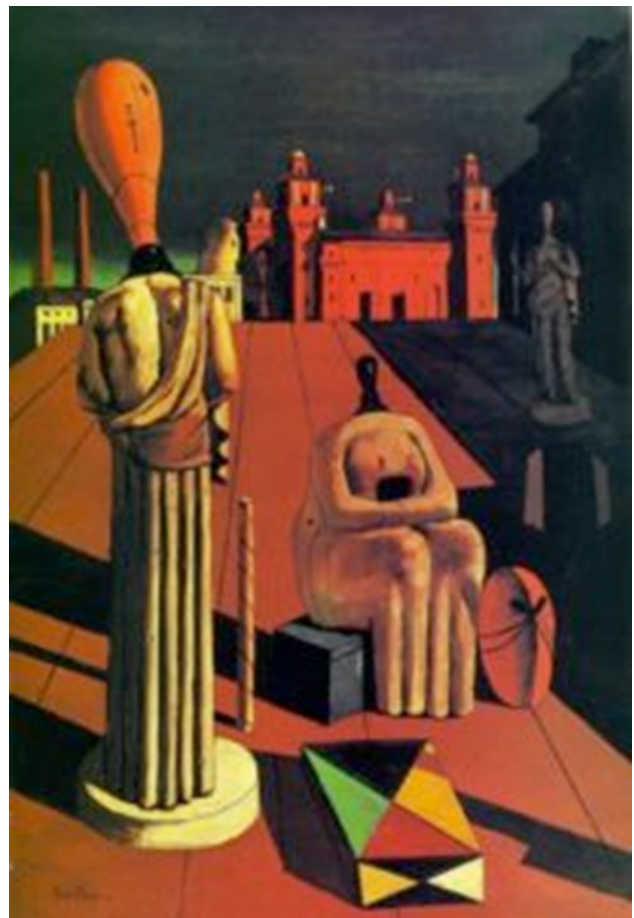
*Mother, you sent me to piano lessons
And praised my arabesques and trills
Although each teacher found my touch
Oddly wooden in spite of scales
And the hours of practicing, my ear
Tone-deaf and yes, unteachable.
I learned, I learned, I learned elsewhere,
From muses unhired by you, dear mother.*

Sylvia Plath herself suggested the dummies represent a 20th Century version of other sinister trios of women, the three fates, the witches in MacBeth, the Quincy sisters of madness.

*I woke one day to see you, mother,

Floating above me in bluest air
On a green balloon bright with a million
Flowers and bluebirds that never were
Never, never, found anywhere.
But the little planet bobbed away
Like a soap-bubble as you called: Come here!
And I faced my traveling companions.*

*Day now, night now, at head, side, feet,
They stand their vigil in gowns of stone,
Faces blank as the day I was born.
Their shadows long in the setting sun
That never brightens or goes down.
And this is the kingdom you bore me to,
Mother, mother. But no frown of mine
Will betray the company I keep.*



Giorgio de Chirico, *The Disquieting Muses*, 1918



BLUE MOUNTAINS
Clay Collective Inc.

Fighting hunger one bowl at a time

Empty Bowls is an international project to fight hunger, personalised by artists and art organisations on a community level.

The money raised is donated to soup kitchens, food banks and other organisations fighting hunger locally.

Blue Mountains Clay Collective is holding the Inaugural **Empty Bowls** fundraising event on **Saturday 7th September at Junction 142 in Katoomba**

Funds raised will be going to **Junction 142** to support families and individuals in need. Patrons to this ticketed event will choose a beautiful hand-made bowl, have it filled with delicious homemade soup plus bread roll. There will be live music, a silent auction, and several raffles with amazing prizes ranging from dinner for 2 at a Blue Mountains restaurant to a luxury getaway in one of the Blue Mountains top hotels.

There are 2 ways that you can help us to make this inaugural event a huge success:

1) Donation of bowls for the soup

We need donations of at least 200 handmade bowls. These should hold between 350-500mls. As the event is on 7th September we need to receive pledges by 1st June and the bowls by 30th August.

We will have drop off points at several locations in the Blue Mountains and we will arrange pick-ups in June, July and August. 100% of the proceeds from the Empty Bowls Project will be donated to **Junction 142**.

2) Silent Auction Submission

We welcome you to enter a piece of your choice to be auctioned at the event in a silent auction which will be held both live and on-line. Please provide a plinth and a reserve price if required.

Items will need to be delivered on Friday 6th September between 9.30am and 4pm.

You will receive 80% of the sale price 7-14 days after the event, 20% commission being held to cover the costs of this event.

To register your interest please complete the form below and email bluemountainsclaycollective@gmail.com or call **Linda Kemp 0430 477 301** for more details



Fighting hunger one bowl at a time



Contact Details	
First Name:	Last Name:
Address:	
Mobile:	
Email:	
Empty Bowls	
Number of Bowls to donate:	
Do you require bowls to be collected:	
Address for collection:	

Could you pass this letter on to any Potters & keen Ceramicists on your mailing lists in the spirit of generosity to help us reach our goal of **200 lovely handmade ceramic bowls** to feed those with food insecurity. All proceeds from the bowls will go directly to **Junction 142**

Silent Auction
Item Description: _____
Do you require item to be collected?

Further details will be sent through regarding the Empty Bowls donations/Silent Auction once your form has been returned.

To register your interest please complete the form below and email bluemountainsclaycollective@gmail.com or call Linda Kemp 0430 477 301 for more details

WHAT'S ON ?

Workshops, Galleries, Exhibitions, Prize Entries, Coming Events

Under the August Sky: the Spirit & Colour of the Mountains



MAY ZIADE SOLO EXHIBITION

8th - 19th AUGUST 2024

Opening event - Saturday 10th August.
4pm - 6pm

Guest speaker: Graeme Prince

'Under the August Sky' is inspired by living in the Blue Mountains, nature's tangled patterns of leaves, branches and trees in my bush backyard - and those dazzling orange sunset skies!

BLACK + WHITE EXHIBITION

**GALLERY
NWC**
NATIONWIDECURATING.COM



BLACK + WHITE

Curator Selection: Mixed Art Exhibition

Exhibition Dates: 8-19 August

Gallery 2 - Gallery NWC

188 Katoomba St, Katoomba NSW 2780

Gallery Hours: Thursdays to Mondays 10am - 4 pm

Contributing Artists:

Brian A Reid

Charles Hebert

Fiona Johnson

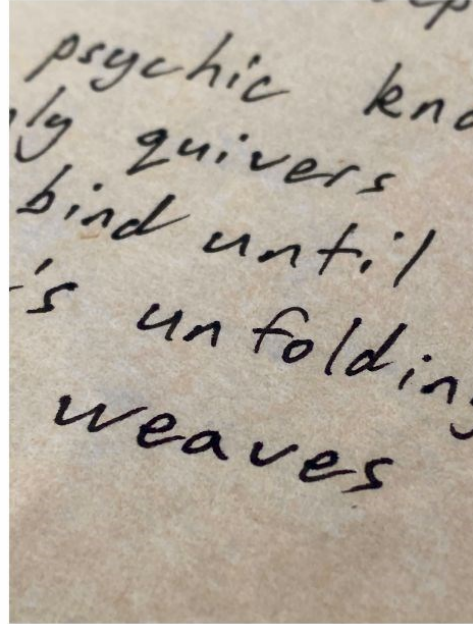
Renee Mitchell

Sue Gasser

UN/TETHERING

ART EXHIBITION

TRACY STIRZAKER + MITCHELL STIRZAKER



Exhibition Dates:
29 August - 9 September 2024

Opening Event:
Saturday 31 August 2024 | 5-7pm
Poetry reading by Mitchell Stirzaker

20
24

Investigating threads of life through mixed media art and poetry. An exhibition by artist Tracy Stirzaker and poet Mitchell Stirzaker exploring threads of resilience, love and freedom

Gallery NWC
188 Katoomba Street, Katoomba NSW 2780
PH: 0402 470 231 | info@nationwidecurating.com

**GALLERY
NWC**
NATIONWIDECURATING.COM



PENRITH REGIONAL GALLERY

86 River Road, Emu Plains

The Gallery is open daily from 10am – 3.45pm

[The Interior - Penrith Regional Gallery](#)

[Vuvale - Penrith Regional Gallery](#)

[To Be Continued - Penrith Regional Gallery](#)

All exhibiting 17 Aug - 27 Oct

BLUE MOUNTAINS CULTURAL CENTRE

30 Parke Street, Katoomba 2780

Gallery and Shop: Monday – Friday 10am – 5pm, Saturday + Sunday – 10am – 4pm

[Fire Within - Blue Mountains Cultural Centre](#) Until 11 August

[Jennifer Brady: Space to think, feel, learn, grow - Blue Mountains Cultural Centre](#) 17 Aug – 13 Oct

[Disruptor: for all that matters - Blue Mountains Cultural Centre](#) 3 Aug – 6 Oct

BRAEMAR HOUSE & GALLERY

104 Macquarie Road, Springwood 2777

Opening Hours: 10am – 4pm | Thursday – Sunday

Contact: Email braemargallery@gmail.com

or phone the Blue Mountains Cultural Centre on 02 4780 5410.

17 Jul - 25 Aug

The Spirit of the Blue Mountains is the annual group exhibition by the Braemar Gallery volunteers. With a diverse group of artists, this exhibition is a wonderful celebration of the artistic talents within our volunteer team. With works ranging from watercolours to sculpture, the artists have united under the common theme and share their passion for the region.

Official opening 11am on Saturday 17 August as part of the HUBBUB celebration event with Springwood Library and the Blue Mountains Theatre + Hub.

29 Aug - 29 Sept 2024

Fiona Lenord: *Wattle Days*

Fay Graham: *Texture*

Anita Swanson: *Strays*



Blue Mountains Creative Arts Centre, Glenbrook
 Class Timetable Term 3, 2024 www.bmcac.org.au

Online enrolments open July 01

Week 1 starts July 29, term goes for 8 weeks, finishing September 20, unless otherwise stated on timetable.

Please note: Children must be enrolled prior to attending lessons. Late enrolments cannot be accepted unless there is room in the class, please email enquiry to bmcac.mail@gmail.com. Children's classes are for children aged 6 to 12 years.

All adult students must be members of BMCAC. Membership is \$50 per annum. \$25 after June.

Day	Time	Code – Class	Teacher/ Facilitator
Mon	9:30 – 12:30	APMM9 – Exploring Printmaking - Come and learn different printmaking techniques. Suitable for beginners and experienced printmakers. Materials list will be sent by email to students once booking is made. Starts August 5.	Cheryle Yin Lo 0407 409 445
	12:30-3:30	Printmaking -Open Studios Access Come and join BMCAC members in the Blue Mountains Printmaking Ink group and join a passionate group interested in exploring and learning printmaking techniques together. Bring your own project . Please contact Cheryle to book in for this session Mobile 0407409445.Suitable for beginners and experienced printmakers.	Cheryle Yin Lo 0407 409 445
	4:00-5:30	CAM4 – Art for children - From Past to Present- Advancing Sketch and Drawing Skills in Art History (Ages 10-16) Learn to master classic techniques and improve observational skills to create unique art. \$200	Chloe Coard 0401 882 779
	4:00 - 5:30	CPM4 – Pottery for Children – Fun with clay ages 6 to 12. \$200	Alison James 0416 957 688
	6:30–8:30	AAM6 – Drawing for beginners and Intermediate. Learn the finer skills of drawing. \$200	Gus Carrozza 0421 041 878
	6:30-9:30	Drop in and pot – experienced only – no tuition. Membership of BMCAC and Potters Group required. \$5 per session. Ring to book.	Bronwyn Campbell 0411 041 054
Tues	10:00 – 1:00	AAT10 – Exploring Painting - An introduction to oil or acrylic painting and techniques. Choose your own subject matter, style and technique of painting to paint a portrait, landscape, still life, abstract or mixed media painting or painting project . \$240 Starts August 6.	Cheryle Yin Lo 0407 409 445
	1:30 – 3:30	Drop in and print	Cheryle Yin Lo 0407 409 445
	4:00 - 5:30	CPT4 – Pottery for Children – Fun with clay for ages 6 to 12. \$200	Alison James 0416 957 688
	6:30 - 9:30	AMT6 – Mosaics - Come and learn mosaics for the first time or improve your existing skills. Adult class suitable for all levels. \$240 - plus \$45 materials fee in cash (8 x 3 hr sessions)	Andrea Ketterling 0416727030
	6:30 - 9:30	Drop in and pot – experienced only – no tuition. Membership of BMCAC and Potters Group required. \$5 per session. Ring to book.	Bronwyn Campbell 0411 041 054
Wed	9:00 – 12:00	AMW9– Mosaics - Come and learn mosaics for the first time or improve your existing skills. Adult class suitable for all levels. \$240 - plus \$45 materials fee in cash (8 x 3 hr sessions)	Andrea Ketterling 0416727030
	12:30 – 2:30	AMW12– Mosaics - Come and learn mosaics for the first time or improve your existing skills. Adult class suitable for all levels. \$200 - plus \$45 materials fee in cash (8 x 2 hr sessions)	Andrea Ketterling 0416727030
	4:00-5:30	CPW4 - Pottery for Senior Primary and Junior Secondary students - Extending skills in clay work. (Ages 11 to 14) \$200	Alison James 0416 957 688
	6:30 - 8:30	APW6 – Pottery for Adults – Hand building and wheel throwing for beginners and continuers. beginners class, 4 weeks of hand building and 4 weeks of wheel throwing. \$200. (plus \$30 cash glaze and firing fee due week 3). Optional: A basic tool kit and clay \$50 cash on first session, or just clay \$30.	Ingrid Russell and Bronwyn Campbell 0423 124 473
	6:30 - 8:30	AWW6 – Painting with Watercolour – beginners and intermediate. Learn the basics or extend skills in painting with watercolour \$200	Gus Carrozza 0421 041 878
Thurs	1:30 - 3:30	APTH1 – Pottery for Adults – For continuers – Hand building. Project based course. This term we will extend our skills with mold making and sgraffito. Firing, mold materials, and glaze fee \$50 cash. \$200	Ingrid Russell 0423 124 473
	1:30 - 3:30	AWTH1 – Pen and Wash with Watercolours– beginners and intermediate. Learn the basics or extend skills in pen and wash with watercolours. - \$200	Gus Carrozza 0421 041 878
	4:00 - 5:00	CATH4 - Figuring it Out -Drawing People and Characters! (Ages 8-14) \$200 Character Drawing: bringing people and animals to life using manga and cartoons.	Chloe Coard 0401 882 779
	4:00 – 5:00	APTH4 – Throwing pots on the wheel – Beginners tuition. Small group throwing lessons. Get started with wheel work. 4 weeks. Clay and tools provided. \$40 deposit, \$60 per week cash.	Ingrid Russell 0423 124 473
	6:00 – 9:00	AATH6 – Exploring Printmaking - Come and learn different printmaking techniques. Suitable for beginners and experienced printmakers. Materials list will be sent by email to students once booking is made.\$200. 6 sessions. No session on first Thursday of the month. Starts August 8.	Cheryle Yin Lo 0407 409 445
	6:30 – 9:00	APTH6 – Pottery for Adults – For continuers – Hand building. Project based course. This term we will extend our skills with mold making and sgraffito. Firing, mold materials, and glaze fee \$50 cash. \$200 (6 x 2.5 hr. sessions, no session 1 st Thurs of month). \$200 Starts August 8.	Ingrid Russell 0423 124 473
	7:30 - 9:30	Committee meeting – first Thursday per month. Members welcome.	N/A
Fri	10:00 – 1:00	LDF10 - Life Drawing. Untutored sessions with model. \$200 for 8 weeks. Enrol online.	Rick Hawkins 0401 399 655
	1:30 – 3:30	Drop in and print. Ring to book.	Cheryle Yin lo 0407 409 445
	4:00-5:30	CAF4 – Little Learners - Engaging art activities for kids. (Ages 4-9) \$200 Take home a new drawing from your child every week! In this class we will introduce composition ideas and build upon drawing skills.	Chloe Coard 0401 882 779
Sat	9:00 - 12:00	Drop in and pot – experienced only – no tuition. Membership of BMCAC and Potters Group required. \$5 per session. Book with facilitator	Michael Dausmann. 0415 120 139
	9:00 – 5:00	Drop in and Print – experienced only – No tuition. Come and use our print making facilities. Membership of BMCAC and Print Group required. \$5 per session with own materials or \$15 using centre materials. Available when no exhibitions or workshops are happening. Book with facilitator	Cheryle Yin Lo 0407 409 445
Sun	9:00 - 5:00	Drop in and Print – experienced only – No tuition. Come and use our print making facilities. Membership of BMCAC and Print Group required. \$5 per session with own materials or \$15 using centre materials. Available when no exhibitions or workshops are happening. Book with facilitator	Cheryle Yin Lo 0407 409 445